

Product datasheet for **TA384540**

INSRR Rabbit Polyclonal Antibody

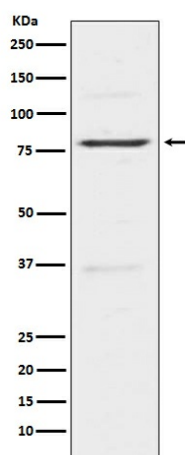
Product data:

Product Type:	Primary Antibodies
Applications:	IHC, WB
Recommended Dilution:	WB: 1/500-1/2000 IHC: 1/50-1/200
Reactivity:	Human, Mouse, Rat
Host:	Rabbit
Isotype:	IgG
Clonality:	Polyclonal
Immunogen:	A synthesized peptide derived from human Insulin Receptor R
Formulation:	Rabbit IgG in phosphate buffered saline , pH 7.4, 150mM NaCl, 0.02% sodium azide and 50% glycerol.
Concentration:	lot specific
Purification:	Affinity Chromatography
Conjugation:	Unconjugated
Storage:	Store at 4°C short term. Aliquot and store at -20°C long term. Avoid freeze/thaw cycles.
Stability:	1 year
Predicted Protein Size:	80kDa
Database Link:	P14616
Background:	Swiss-Prot Acc.P14616.This receptor probably binds an insulin related protein and has a tyrosine-protein kinase activity. It phosphorylates the insulin receptor substrates IRS-1 and IRS-2.



[View online »](#)

Product images:



Western blot analysis of Insulin Receptor R in HeLa lysates using Insulin Receptor Related Protein antibody.