

Product datasheet for **TA384537**

INPP4B Rabbit Polyclonal Antibody

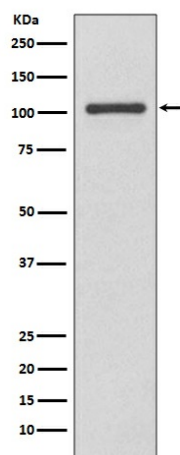
Product data:

Product Type:	Primary Antibodies
Applications:	FC, IHC, WB
Recommended Dilution:	WB: 1/1000-1/2000 IHC: 1/50-1/200 FC: 1/50
Reactivity:	Human, Mouse, Rat
Host:	Rabbit
Isotype:	IgG
Clonality:	Polyclonal
Immunogen:	A synthesized peptide derived from human INPP4B
Formulation:	Rabbit IgG in phosphate buffered saline , pH 7.4, 150mM NaCl, 0.02% sodium azide and 50% glycerol.
Concentration:	lot specific
Purification:	Affinity Chromatography
Conjugation:	Unconjugated
Storage:	Store at 4°C short term. Aliquot and store at -20°C long term. Avoid freeze/thaw cycles.
Stability:	1 year
Predicted Protein Size:	107kDa
Gene Name:	inositol polyphosphate-4-phosphatase type II B
Database Link:	Entrez Gene 8821 Human O15327
Background:	Swiss-Prot Acc.O15327.Catalyzes the hydrolysis of the 4-position phosphate of phosphatidylinositol 3,4-bisphosphate, inositol 1,3,4-trisphosphate and inositol 1,4-bisphosphate.
Synonyms:	MGC132014



[View online »](#)

Product images:



Western blot analysis of INPP4B in MCF-7 lysates using INPP4B antibody.