

Product datasheet for **TA384535**

alpha Internexin (INA) Rabbit Polyclonal Antibody

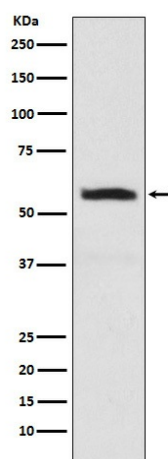
Product data:

Product Type:	Primary Antibodies
Applications:	FC, IF, IHC, IP, WB
Recommended Dilution:	WB: 1/500-1/2000 IHC: 1/50-1/200 ICC/IF: 1/50-1/200 IP: 1/50 FC: 1/20
Reactivity:	Human, Mouse, Rat
Host:	Rabbit
Isotype:	IgG
Clonality:	Polyclonal
Immunogen:	A synthesized peptide derived from human alpha Internexin
Formulation:	Rabbit IgG in phosphate buffered saline , pH 7.4, 150mM NaCl, 0.02% sodium azide and 50% glycerol.
Concentration:	lot specific
Purification:	Affinity Chromatography
Conjugation:	Unconjugated
Storage:	Store at 4°C short term. Aliquot and store at -20°C long term. Avoid freeze/thaw cycles.
Stability:	1 year
Predicted Protein Size:	60kDa
Gene Name:	internexin neuronal intermediate filament protein alpha
Database Link:	Entrez Gene 9118 Human Q16352
Background:	Swiss-Prot Acc.Q16352.Class-IV neuronal intermediate filament that is able to self-assemble. It is involved in the morphogenesis of neurons. It may form an independent structural network without the involvement of other neurofilaments or it may cooperate with NF-L to form the filamentous backbone to which NF-M and NF-H attach to form the cross-bridges.
Synonyms:	Alpha-Inx; FLJ18662; FLJ57501; MGC12702; NEF5; Neurofilament-66; NF-66; TXBP-1



[View online »](#)

Product images:



Western blot analysis of alpha Internexin in SH-SY5Y lysates using alpha Internexin antibody.