

## Product datasheet for **TA384533**

### Integrin Linked Kinase (ILK) Rabbit Polyclonal Antibody

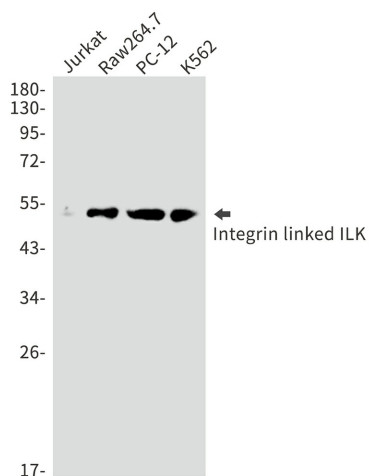
#### Product data:

Product Type:	Primary Antibodies
Applications:	FC, IF, WB
Recommended Dilution:	WB: 1/2000 ICC/IF: 1/50 FC: 1/20
Reactivity:	Human, Mouse, Rat
Host:	Rabbit
Isotype:	IgG
Clonality:	Polyclonal
Immunogen:	A synthetic peptide of human Integrin linked ILK
Formulation:	50mM Tris-Glycine(pH 7.4), 0.15M NaCl, 40% Glycerol, 0.01% Sodium azide and 0.05% BSA
Concentration:	lot specific
Purification:	Affinity Purified
Conjugation:	Unconjugated
Storage:	Store at 4°C short term. Aliquot and store at -20°C long term. Avoid freeze/thaw cycles.
Stability:	1 year
Predicted Protein Size:	Calculated MW: 51 kDa; Observed MW: 51 kDa
Gene Name:	integrin linked kinase
Database Link:	<a href="#">Entrez Gene 3611 Human Q13418</a>
Background:	Swiss-Prot Acc.Q13418.
Synonyms:	DKFZp686F1765; ILK-1; ILK-2; ILK1; ILK2; P59; p59ILK



[View online »](#)

## Product images:



Western blot analysis of Integrin linked ILK in Jurkat, Raw264.7, PC-12, K562 lysates using ILK antibody.