

Product datasheet for **TA384532**

Integrin Linked Kinase (ILK) Rabbit Polyclonal Antibody

Product data:

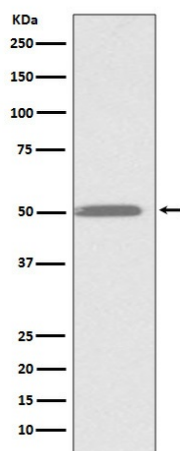
Product Type:	Primary Antibodies
Applications:	FC, IF, IHC, IP, WB
Recommended Dilution:	WB: 1/1000-1/5000 IHC: 1/50-1/200 ICC/IF: 1/50-1/200 IP: 1/50 FC: 1/50
Reactivity:	Human, Mouse, Rat
Host:	Rabbit
Isotype:	IgG
Clonality:	Polyclonal
Immunogen:	A synthesized peptide derived from human ILK
Formulation:	Rabbit IgG in phosphate buffered saline , pH 7.4, 150mM NaCl, 0.02% sodium azide and 50% glycerol.
Concentration:	lot specific
Purification:	Affinity Chromatography
Conjugation:	Unconjugated
Storage:	Store at 4°C short term. Aliquot and store at -20°C long term. Avoid freeze/thaw cycles.
Stability:	1 year
Predicted Protein Size:	51kDa
Gene Name:	integrin linked kinase
Database Link:	Entrez Gene 3611 Human Q13418
Background:	Swiss-Prot Acc.Q13418.Integrin-linked kinases (ILKs) couple integrins and growth factors to downstream pathways involved in cell survival, cell cycle control, cell-cell adhesion and cell motility. ILK functions as a scaffold bridging the extracellular matrix (ECM) and growth factor receptors to the actin cytoskeleton through interactions with integrin, PINCH (which links ILK to the RTKs via Nck2), CH-ILKBP and affixin.



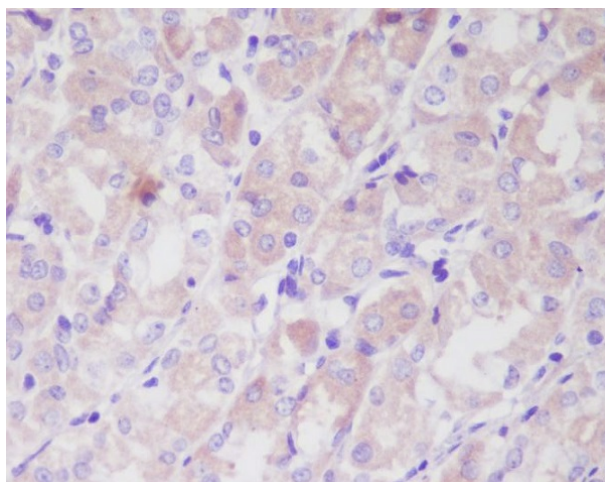
[View online »](#)

Synonyms: DKFZp686F1765; ILK-1; ILK-2; ILK1; ILK2; P59; p59ILK

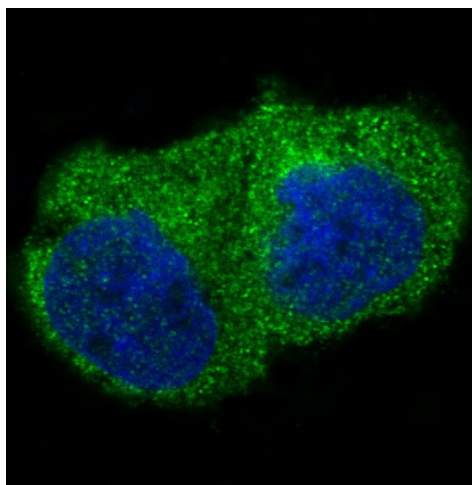
Product images:



Western blot analysis of ILK in K562 lysates using Integrin Linked ILK antibody.



Immunohistochemistry analysis of paraffin-embedded Human stomach using ILK antibody. High-pressure and temperature Sodium Citrate pH 6.0 was used for antigen retrieval.



Immunofluorescence analysis of Integrin Linked ILK in 293 using ILK antibody.