

Product datasheet for **TA384531**

ILF3 Rabbit Monoclonal Antibody [Clone ID: R04-3C1]

Product data:

Product Type:	Primary Antibodies
Clone Name:	R04-3C1
Applications:	IF, IHC, IP, WB
Recommended Dilution:	WB: 1/2000-1/20000 IHC: 1/50 ICC/IF: 1/100 IP: 1/20
Reactivity:	Human, Rat
Host:	Rabbit
Isotype:	IgG
Clonality:	Monoclonal
Immunogen:	A synthetic peptide of human ILF3
Formulation:	50mM Tris-Glycine(pH 7.4), 0.15M NaCl, 40% Glycerol, 0.01% Sodium azide and 0.05% BSA
Concentration:	lot specific
Purification:	Affinity Purified
Conjugation:	Unconjugated
Storage:	Store at 4°C short term. Aliquot and store at -20°C long term. Avoid freeze/thaw cycles.
Stability:	1 year
Predicted Protein Size:	Calculated MW: 95 kDa; Observed MW: 95 kDa
Gene Name:	interleukin enhancer binding factor 3
Database Link:	Entrez Gene 3609 Human Q12906



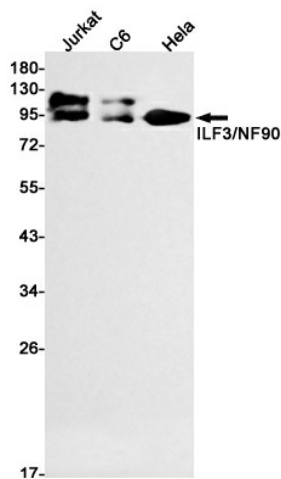
[View online »](#)

Background:

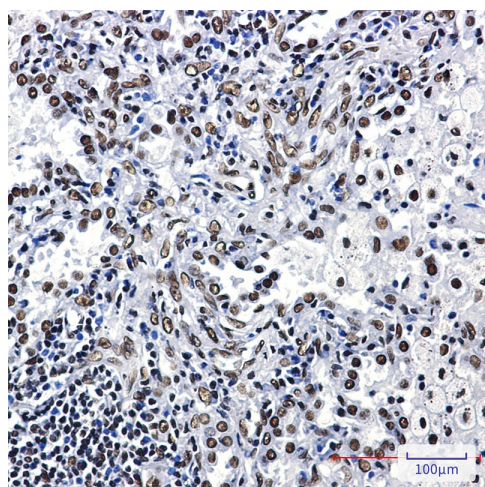
Swiss-Prot Acc.Q12906.RNA-binding protein that plays an essential role in the biogenesis of circular RNAs (circRNAs) which are produced by back-splicing circularization of pre-mRNAs. Within the nucleus, promotes circRNAs processing by stabilizing the regulatory elements residing in the flanking introns of the circularized exons. Plays thereby a role in the back-splicing of a subset of circRNAs (PubMed:28625552). As a consequence, participates in a wide range of transcriptional and post-transcriptional processes. Binds to poly-U elements and AU-rich elements (AREs) in the 3'-UTR of target mRNAs (PubMed:14731398). Upon viral infection, ILF3 accumulates in the cytoplasm and participates in the innate antiviral response (PubMed:21123651). Mechanistically, ILF3 becomes phosphorylated and activated by the double-stranded RNA-activated protein kinase/PKR which releases ILF3 from cellular mature circRNAs. In turn, unbound ILF3 molecules are able to interact with and thus inhibit viral mRNAs (PubMed:21123651, PubMed:28625552).

Synonyms:

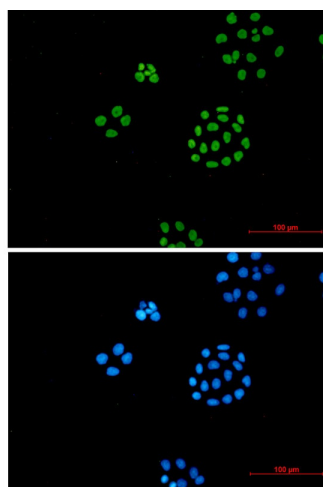
CBTF; DRBF; DRBP76; MMP4; MPHOSPH4; MPP4; NF-AT-90; NF90; NF110; NFAR; NFAR-1; NFAR2; TCP80; TCP110

Product images:

Western blot analysis of ILF3/NF90 in Jurkat, C6, HeLa lysates using ILF3 antibody.



Immunohistochemistry analysis of paraffin-embedded Human lung cancer using ILF3 antibody. High-pressure and temperature Sodium Citrate pH 6.0 was used for antigen retrieval.



Immunocytochemistry analysis of ILF3 (green) in HeLa cells using ILF3 antibody, and DAPI (blue)