

Product datasheet for **TA384528S**

IL6 Rabbit Polyclonal Antibody

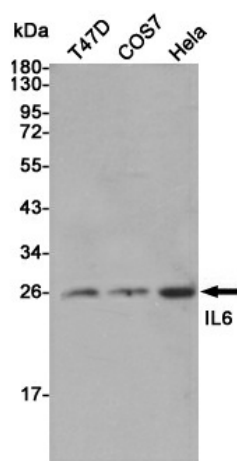
Product data:

| | |
|-------------------------|------------------------------------------------------------------------------------------------------------------------|
| Product Type: | Primary Antibodies |
| Applications: | ELISA, IHC, WB |
| Recommended Dilution: | WB: 1/500-1/2000 IHC-p: 1/100-1/300 ELISA: 1/20000 |
| Reactivity: | Human |
| Host: | Rabbit |
| Isotype: | IgG |
| Clonality: | Polyclonal |
| Immunogen: | The antiserum was produced against synthesized peptide derived from the Internal region of human IL6. AA range:131-180 |
| Formulation: | Liquid in PBS containing 50% glycerol, 0.5% BSA and 0.02% sodium azide, pH 7.3. |
| Concentration: | lot specific |
| Purification: | Affinity Purified |
| Conjugation: | Unconjugated |
| Storage: | Store at 4°C short term. Aliquot and store at -20°C long term. Avoid freeze/thaw cycles. |
| Stability: | 1 year |
| Predicted Protein Size: | Observed MW (kDa):23 |
| Gene Name: | interleukin 6 |
| Database Link: | Entrez Gene 3569 Human P05231 |
| Background: | Swiss-Prot Acc.P05231. |
| Synonyms: | BSF-2; BSF2; CDF; HGF; HSF; IFNB2; IL-6; OTTHUMP00000158544 |

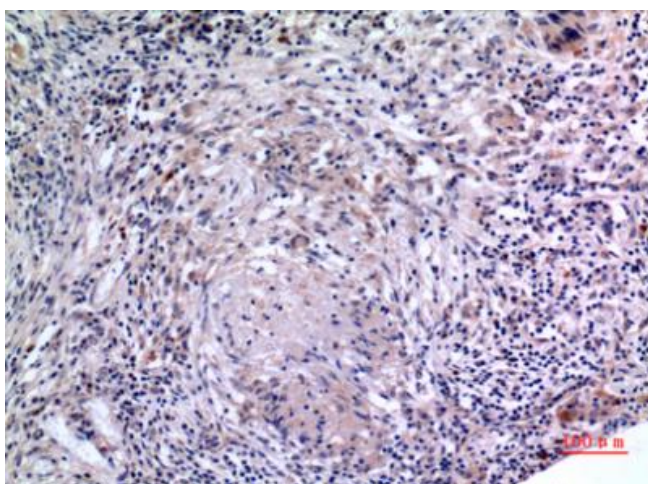


[View online »](#)

Product images:



Western blot analysis of IL-6 in T47D, COS7 and HeLa lysates using IL-6 antibody.



Immunohistochemical analysis of paraffin-embedded human-lung, antibody was diluted at 1:1