

Product datasheet for **TA384528M**

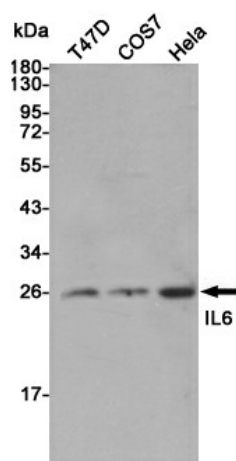
IL6 Rabbit Polyclonal Antibody

Product data:

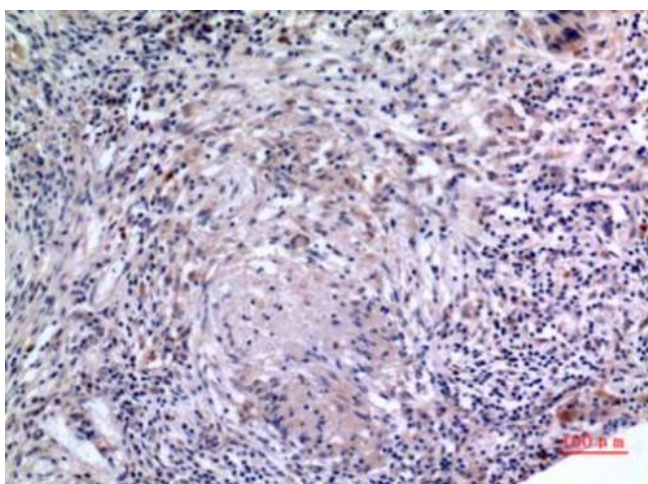
Product Type:	Primary Antibodies
Applications:	ELISA, IHC, WB
Recommended Dilution:	WB: 1/500-1/2000 IHC-p: 1/100-1/300 ELISA: 1/20000
Reactivity:	Human
Host:	Rabbit
Isotype:	IgG
Clonality:	Polyclonal
Immunogen:	The antiserum was produced against synthesized peptide derived from the Internal region of human IL6. AA range:131-180
Formulation:	Liquid in PBS containing 50% glycerol, 0.5% BSA and 0.02% sodium azide, pH 7.3.
Concentration:	lot specific
Purification:	Affinity Purified
Conjugation:	Unconjugated
Storage:	Store at 4°C short term. Aliquot and store at -20°C long term. Avoid freeze/thaw cycles.
Stability:	1 year
Predicted Protein Size:	Observed MW (kDa):23
Gene Name:	interleukin 6
Database Link:	Entrez Gene 3569 Human P05231
Background:	Swiss-Prot Acc.P05231.
Synonyms:	BSF-2; BSF2; CDF; HGF; HSF; IFNB2; IL-6; OTTHUMP00000158544



[View online »](#)

Product images:


Western blot analysis of IL-6 in T47D, COS7 and HeLa lysates using IL-6 antibody.



Immunohistochemical analysis of paraffin-embedded human-lung, antibody was diluted at 1:1