

## Product datasheet for **TA384522M**

### **IL1RA (IL1RN) Rabbit Monoclonal Antibody [Clone ID: R01-6J5]**

#### **Product data:**

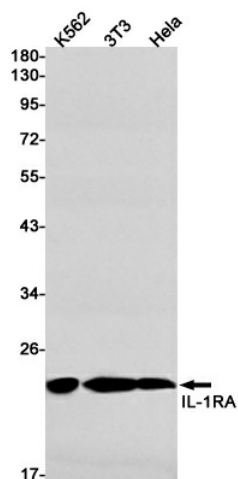
Product Type:	Primary Antibodies
Clone Name:	R01-6J5
Applications:	IF, IHC, IP, WB
Recommended Dilution:	WB: 1/1000 IHC: 1/50 ICC/IF: 1/100 IP: 1/20
Reactivity:	Human, Mouse
Host:	Rabbit
Isotype:	IgG
Clonality:	Monoclonal
Immunogen:	A synthetic peptide of human IL1RA
Formulation:	50mM Tris-Glycine(pH 7.4), 0.15M NaCl, 40% Glycerol, 0.01% Sodium azide and 0.05% BSA
Concentration:	lot specific
Purification:	Affinity Purified
Conjugation:	Unconjugated
Storage:	Store at 4°C short term. Aliquot and store at -20°C long term. Avoid freeze/thaw cycles.
Stability:	1 year
Predicted Protein Size:	Calculated MW: 20 kDa; Observed MW: 20 kDa
Gene Name:	interleukin 1 receptor antagonist
Database Link:	<a href="#">Entrez Gene 3557 Human P18510</a>
Background:	Swiss-Prot Acc.P18510.Inhibits the activity of interleukin-1 by binding to receptor IL1R1 and preventing its association with the coreceptor IL1RAP for signaling. Has no interleukin-1 like activity. Binds functional interleukin-1 receptor IL1R1 with greater affinity than decoy receptor IL1R2; however, the physiological relevance of the latter association is unsure.



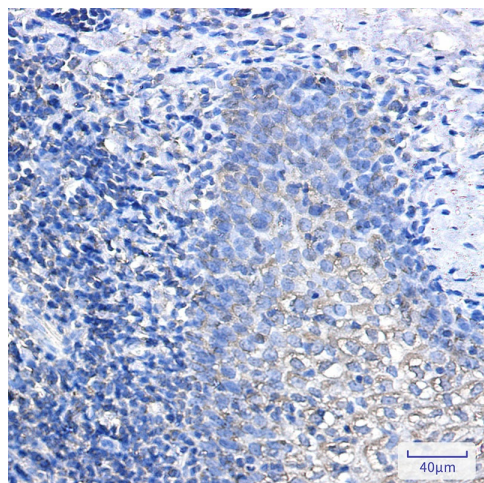
[View online »](#)

**Synonyms:** Anakinra; DIRA; ICIL-1RA; IL-1ra; IL-1ra3; IL-1RN; IL1F3; IL1RA; IRAP; MGC10430; MVCD4; OTTHUMP00000203730

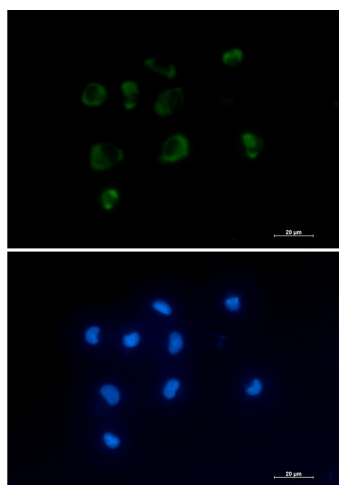
## Product images:



Western blot analysis of IL-1RA in K562, 3T3, HeLa lysates using IL-1RA antibody.



Immunohistochemistry analysis of paraffin-embedded Human tonsil using IL-1RA antibody. High-pressure and temperature Sodium Citrate pH 6.0 was used for antigen retrieval.



Immunocytochemistry analysis of IL 1 Receptor Antagonist Protein (green) in HEPG2 using IL 1 Receptor Antagonist Protein antibody, and DAPI(blue).