

Product datasheet for **TA384521**

IL1RA (IL1RN) Rabbit Polyclonal Antibody

Product data:

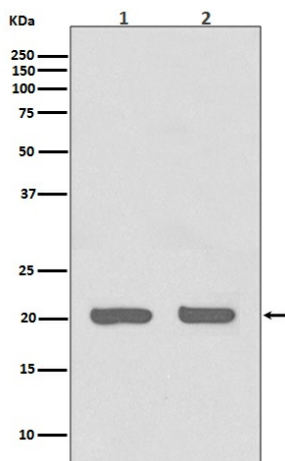
Product Type:	Primary Antibodies
Applications:	FC, IF, IHC, IP, WB
Recommended Dilution:	WB: 1/1000 IHC: 1/50-1/200 ICC: 1/50-1/200 FC: 1/50 IP: 1/50
Reactivity:	Human, Mouse, Rat
Host:	Rabbit
Isotype:	IgG
Clonality:	Polyclonal
Immunogen:	A synthesized peptide derived from human IL1RA
Formulation:	Rabbit IgG in phosphate buffered saline , pH 7.4, 150mM NaCl, 0.02% sodium azide and 50% glycerol.
Concentration:	lot specific
Purification:	Affinity Chromatography
Conjugation:	Unconjugated
Storage:	Store at 4°C short term. Aliquot and store at -20°C long term. Avoid freeze/thaw cycles.
Stability:	1 year
Predicted Protein Size:	20kDa
Gene Name:	interleukin 1 receptor antagonist
Database Link:	Entrez Gene 3557 Human P18510
Background:	Swiss-Prot Acc.P18510.Interleukin-1 (IL-1) is a key pro-inflammatory cytokine that has diverse actions in the brain as a regulator of host defense responses and a mediator of inflammation. Inhibits the activity of interleukin-1 by binding to receptor IL1R1 and preventing its association with the coreceptor IL1RAP for signaling. Has no interleukin-1 like activity.



[View online »](#)

Synonyms: Anakinra; DIRA; ICIL-1RA; IL-1ra; IL-1ra3; IL-1RN; IL1F3; IL1RA; IRAP; MGC10430; MVCD4; OTTHUMP00000203730

Product images:



Western blot analysis of IL-1RA in (1) HeLa lysates; (2) 3T3 lysates using IL-1 Receptor Antagonist Protein antibody.