

## Product datasheet for **TA384520M**

### IL1 beta (IL1B) Rabbit Polyclonal Antibody

#### Product data:

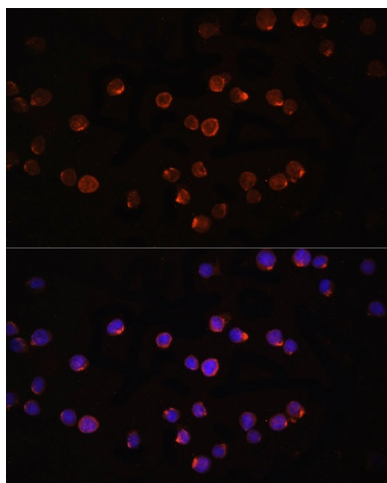
Product Type:	Primary Antibodies
Applications:	IF, IHC, WB
Recommended Dilution:	WB: 1/500-1/2000 IHC: 1/50-1/200 IF: 1/50-1/200
Reactivity:	Human, Mouse, Rat
Host:	Rabbit
Isotype:	IgG
Clonality:	Polyclonal
Immunogen:	A synthetic peptide of human IL1B.Email for sequence
Formulation:	Liquid in PBS containing 50% glycerol, 0.5% BSA and 0.02% sodium azide, pH 7.3.
Concentration:	lot specific
Purification:	Affinity Purified
Conjugation:	Unconjugated
Storage:	Store at 4°C short term. Aliquot and store at -20°C long term. Avoid freeze/thaw cycles.
Stability:	1 year
Predicted Protein Size:	Calculated MW:30kDa;Observed MW:17kDa, 31kDa
Gene Name:	interleukin 1 beta
Database Link:	<a href="#">Entrez Gene 3553 Human P01584</a>
Background:	Swiss-Prot Acc.P01584.The protein encoded by this gene is a member of the interleukin 1 cytokine family. This cytokine is produced by activated macrophages as a proprotein, which is proteolytically processed to its active form by caspase 1 (CASP1/ICE). This cytokine is an important mediator of the inflammatory response, and is involved in a variety of cellular activities, including cell proliferation, differentiation, and apoptosis. The induction of cyclooxygenase-2 (PTGS2/COX2) by this cytokine in the central nervous system (CNS) is found to contribute to inflammatory pain hypersensitivity. This gene and eight other interleukin 1 family genes form a cytokine gene cluster on chromosome 2.



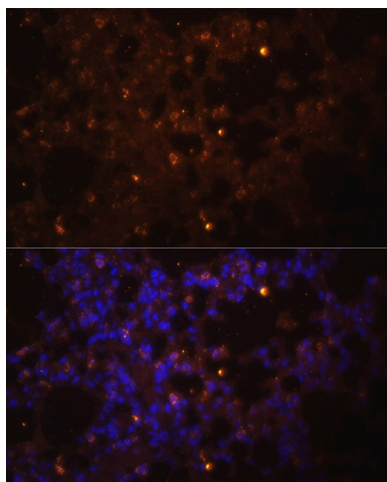
[View online »](#)

**Synonyms:** catabolin; IL-1; IL-1B; IL1-BETA; IL1F2; pro-interleukin-1-beta

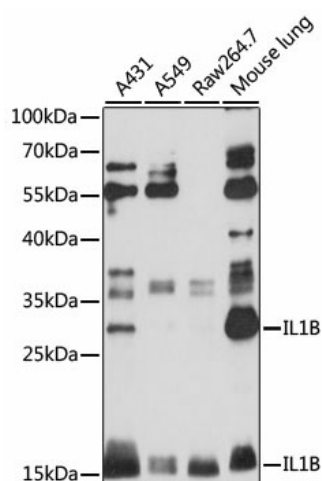
**Product images:**



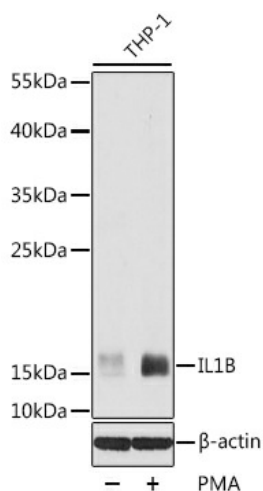
Immunofluorescence - IL1B Polyclonal Antibody.  
Immunofluorescence analysis of THP-1 cells using IL1B antibody at dilution of 1:100. Blue: DAPI for nuclear staining.



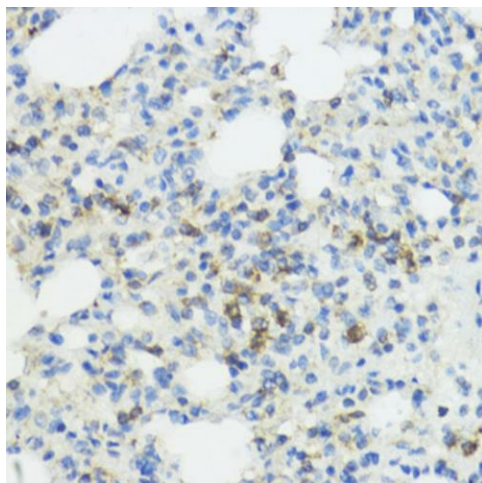
Immunofluorescence - IL1B Polyclonal Antibody.  
Immunofluorescence analysis of mouse lung using IL1B antibody at dilution of 1:100. Blue: DAPI for nuclear staining.



Western blot - IL1B Polyclonal Antibody. Western blot analysis of extracts of various cell lines, using IL1B antibody at 1:1000 dilution. Secondary antibody: HRP Goat Anti-Rabbit IgG at 1:10000 dilution. Lysates/proteins: 25ug per lane. Blocking buffer: 3% nonfat dry milk in TBST. Exposure time: 3s.



Western blot - IL1B Polyclonal Antibody. Western blot analysis of extracts of THP-1 cells, using IL1B antibody at 1:1000 dilution. THP-1 cells were treated by PMA at 37°C for overnight. Secondary antibody: HRP Goat Anti-Rabbit IgG at 1:10000 dilution. Lysates/proteins: 25ug per lane. Blocking buffer: 3% nonfat dry milk in TBST. Exposure time: 3s.



Immunohistochemistry - IL1B Polyclonal Antibody. Immunohistochemistry of paraffin-embedded rat lung using IL1B antibody at dilution of 1:1.