

## Product datasheet for **TA384518M**

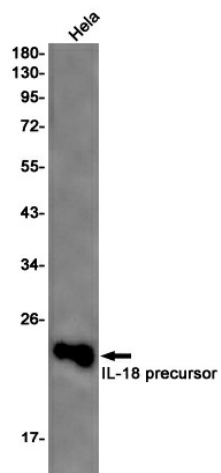
### IL18 Rabbit Monoclonal Antibody [Clone ID: R02-8B2]

#### Product data:

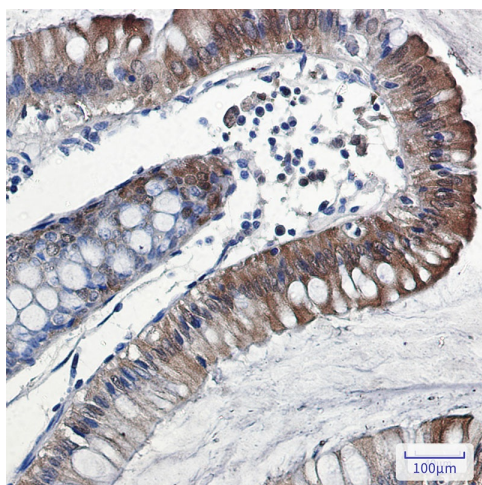
Product Type:	Primary Antibodies
Clone Name:	R02-8B2
Applications:	IHC, WB
Recommended Dilution:	WB: 1/1000 IHC: 1/200
Reactivity:	Human
Host:	Rabbit
Isotype:	IgG
Clonality:	Monoclonal
Immunogen:	Recombinant protein of human IL18
Formulation:	50mM Tris-Glycine(pH 7.4), 0.15M NaCl, 40% Glycerol, 0.01% Sodium azide and 0.05% BSA
Concentration:	lot specific
Purification:	Affinity Purified
Conjugation:	Unconjugated
Storage:	Store at 4°C short term. Aliquot and store at -20°C long term. Avoid freeze/thaw cycles.
Stability:	1 year
Predicted Protein Size:	Calculated MW: 22 kDa; Observed MW: 17 kDa
Gene Name:	interleukin 18
Database Link:	<a href="#">Entrez Gene 3606 Human Q14116</a>
Background:	Swiss-Prot Acc.Q14116.A proinflammatory cytokine primarily involved in polarized T-helper 1 (Th1) cell and natural killer (NK) cell immune responses (Probable). Upon binding to IL18R1 and IL18RAP, forms a signaling ternary complex which activates NF-kappa-B, triggering synthesis of inflammatory mediators (PubMed:14528293, PubMed:25500532). Synergizes with IL12/interleukin-12 to induce IFNG synthesis from T-helper 1 (Th1) cells and natural killer (NK) cells (Probable) (PubMed:10653850).
Synonyms:	Iboctadekin; IGIF; IL-1g; IL-18; IL1F4; interleukin-18; MGC12320


[View online »](#)

## Product images:



Western blot analysis of IL-18 in HeLa lysates using IL-18 antibody.



Immunohistochemistry analysis of paraffin-embedded Human colon cancer using IL-18 antibody. High-pressure and temperature Sodium Citrate pH 6.0 was used for antigen retrieval.