

Product datasheet for **TA384517**

IL17RC Rabbit Polyclonal Antibody

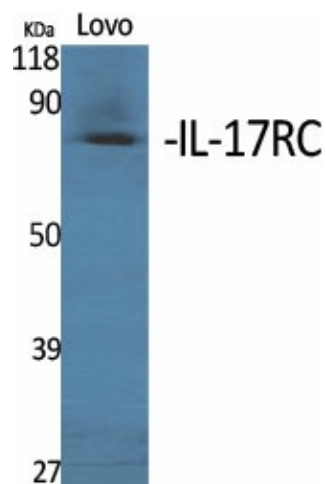
Product data:

Product Type:	Primary Antibodies
Applications:	ELISA, WB
Recommended Dilution:	WB: 1/500-1/2000 ELISA: 1/20000
Reactivity:	Human
Host:	Rabbit
Isotype:	IgG
Clonality:	Polyclonal
Immunogen:	The antiserum was produced against synthesized peptide derived from human IL17RC. AA range:721-770
Formulation:	Liquid in PBS containing 50% glycerol, 0.5% BSA and 0.02% sodium azide, pH 7.3.
Concentration:	lot specific
Purification:	Affinity Chromatography
Conjugation:	Unconjugated
Storage:	Store at 4°C short term. Aliquot and store at -20°C long term. Avoid freeze/thaw cycles.
Stability:	1 year
Predicted Protein Size:	Observed MW (kDa):70
Database Link:	Q8NAC3
Background:	Swiss-Prot Acc.Q8NAC3.Receptor for IL17A and IL17F homodimers as part of a heterodimeric complex with IL17RA (PubMed:16785495). Receptor for the heterodimer formed by IL17A and IL17B as part of a heterodimeric complex with IL17RA (PubMed:18684971). Has also been shown to be the cognate receptor for IL17F and to bind IL17A with high affinity without the need for IL17RA (PubMed:17911633). Activation of IL17RC leads to induction of expression of inflammatory chemokines and cytokines such as CXCL1 (PubMed:16785495).

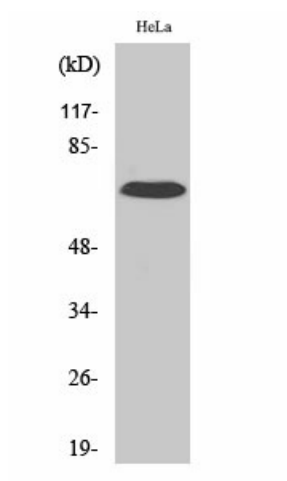


[View online »](#)

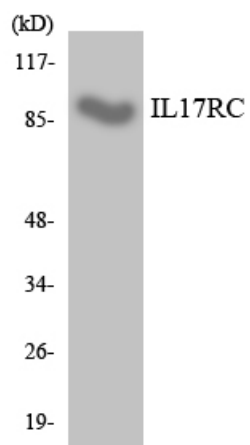
Product images:



Western blot analysis of IL-17 Receptor C in various lysates using IL-17 Receptor C antibody.



Western blot analysis of IL-17 Receptor C in HuvEc lysates using IL-17RC antibody.



Western blot analysis of IL-17 Receptor C in RAW264.7 lysates using IL-17RC antibody.