

## Product datasheet for TA384514

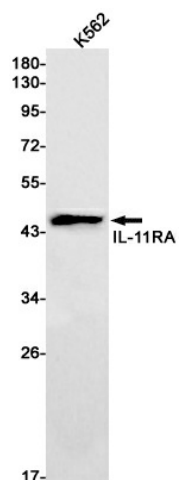
### IL11RA Rabbit Monoclonal Antibody [Clone ID: R08-2J3]

#### Product data:

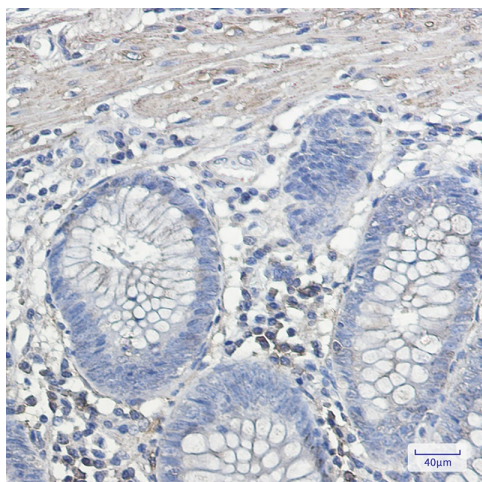
Product Type:	Primary Antibodies
Clone Name:	R08-2J3
Applications:	IHC, WB
Recommended Dilution:	WB: 1/1000 IHC: 1/100-1/100
Reactivity:	Human
Host:	Rabbit
Isotype:	IgG
Clonality:	Monoclonal
Immunogen:	A synthetic peptide of human IL11RA
Formulation:	50mM Tris-Glycine(pH 7.4), 0.15M NaCl, 40% Glycerol, 0.01% Sodium azide and 0.05% BSA
Concentration:	lot specific
Purification:	Affinity Purified
Conjugation:	Unconjugated
Storage:	Store at 4°C short term. Aliquot and store at -20°C long term. Avoid freeze/thaw cycles.
Stability:	1 year
Predicted Protein Size:	Calculated MW: 45 kDa; Observed MW: 45 kDa
Gene Name:	interleukin 11 receptor subunit alpha
Database Link:	<a href="#">Entrez Gene 3590 Human Q14626</a>
Background:	Swiss-Prot Acc.Q14626.Receptor for interleukin-11. The receptor systems for IL6, LIF, OSM, CNTF, IL11 and CT1 can utilize IL6ST for initiating signal transmission. The IL11/IL11RA/IL6ST complex may be involved in the control of proliferation and/or differentiation of skeletogenic progenitor or other mesenchymal cells. Essential for the normal development of craniofacial bones and teeth. Restricts suture fusion and tooth number.
Synonyms:	IL-11R-alpha; IL-11RA; MGC2146


[View online »](#)

## Product images:



Western blot analysis of IL-11RA in K562 lysates using IL-11 Receptor alpha antibody.



Immunohistochemistry analysis of paraffin-embedded Human colon cancer using IL-11RA antibody. High-pressure and temperature Sodium Citrate pH 6.0 was used for antigen retrieval.