

Product datasheet for **TA384510**

IKK gamma (IKBK γ) Rabbit Polyclonal Antibody

Product data:

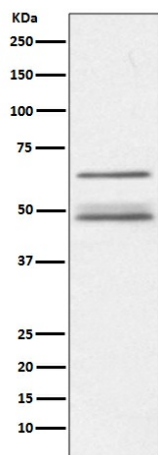
Product Type:	Primary Antibodies
Applications:	FC, IF, IHC, IP, WB
Recommended Dilution:	WB: 1/500-1/2000 IHC: 1/50-1/200 ICC/IF: 1/50-1/200 IP: 1/50 FC: 1/50
Reactivity:	Human, Mouse, Rat
Host:	Rabbit
Isotype:	IgG
Clonality:	Polyclonal
Immunogen:	A synthesized peptide derived from human IKK gamma
Formulation:	Rabbit IgG in phosphate buffered saline , pH 7.4, 150mM NaCl, 0.02% sodium azide and 50% glycerol.
Concentration:	lot specific
Purification:	Affinity Chromatography
Conjugation:	Unconjugated
Storage:	Store at 4°C short term. Aliquot and store at -20°C long term. Avoid freeze/thaw cycles.
Stability:	1 year
Predicted Protein Size:	48kDa
Gene Name:	inhibitor of kappa light polypeptide gene enhancer in B-cells, kinase gamma
Database Link:	Entrez Gene 8517 Human Q9Y6K9
Background:	Swiss-Prot Acc.Q9Y6K9.The NF- κ B/Rel transcription factors are present in the cytosol in an inactive state, complexed with the inhibitory I κ B proteins. Most agents that activate NF- κ B do so through a common pathway based on phosphorylation-induced, proteasome-mediated degradation of I κ B.



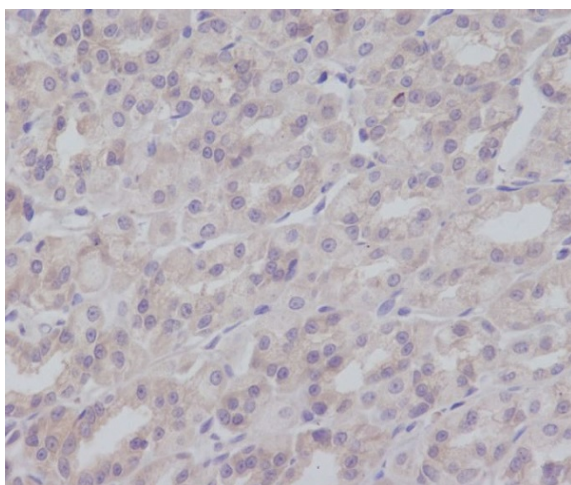
[View online »](#)

Synonyms: AMCBX1; FIP-3; FIP3; Fip3p; IKK-gamma; IKKAP1; IKKG; IP; IP1; IP2; IPD2; NEMO; OTTHUMP00000026027

Product images:



Western blot analysis of IKK gamma in Jurkat lysates using IKK gamma antibody.



Immunohistochemistry analysis of paraffin-embedded mouse colon using IKK gamma antibody. High-pressure and temperature Sodium Citrate pH 6.0 was used for antigen retrieval.