

Product datasheet for **TA384509**

IKBKE Rabbit Polyclonal Antibody

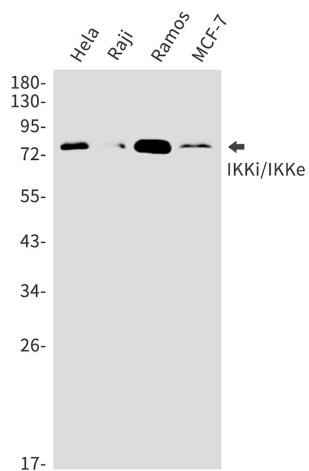
Product data:

Product Type:	Primary Antibodies
Applications:	FC, IF, IHC, WB
Recommended Dilution:	WB: 1/2000-1/10000 IHC: 1/20-1/50 ICC/IF: 1/20-1/100 FC: 1/20
Reactivity:	Human
Host:	Rabbit
Isotype:	IgG
Clonality:	Polyclonal
Immunogen:	A synthetic peptide of human IKKi/IKKe
Formulation:	50mM Tris-Glycine(pH 7.4), 0.15M NaCl, 40% Glycerol, 0.01% Sodium azide and 0.05% BSA
Concentration:	lot specific
Purification:	Affinity Purified
Conjugation:	Unconjugated
Storage:	Store at 4°C short term. Aliquot and store at -20°C long term. Avoid freeze/thaw cycles.
Stability:	1 year
Predicted Protein Size:	Calculated MW: 81 kDa; Observed MW: 81 kDa
Gene Name:	inhibitor of kappa light polypeptide gene enhancer in B-cells, kinase epsilon
Database Link:	Entrez Gene 9641 Human Q14164
Background:	Swiss-Prot Acc.Q14164.
Synonyms:	IKK-E; IKK-epsilon; IKK-i; IKKE; IKKI; KIAA0151; MGC125294; MGC125295; MGC125297



[View online »](#)

Product images:



Western blot analysis of IKKi/IKKe in HeLa, Raji, Ramos, MCF-7 lysates using IKK epsilon antibody.