

## Product datasheet for **TA384508**

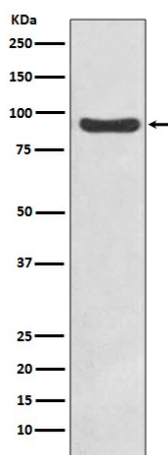
### IKK beta (IKBKB) Rabbit Polyclonal Antibody

#### Product data:

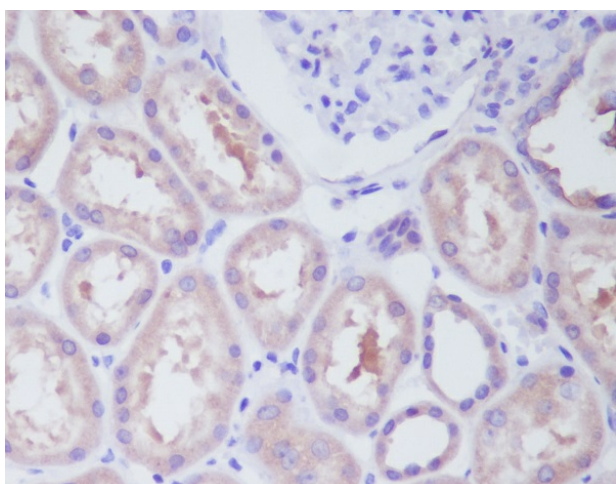
Product Type:	Primary Antibodies
Applications:	IF, IHC, WB
Recommended Dilution:	WB: 1/500-1/2000 IHC: 1/50-1/200 ICC/IF: 1/50-1/200
Reactivity:	Human, Mouse, Rat
Host:	Rabbit
Isotype:	IgG
Clonality:	Polyclonal
Immunogen:	A synthesized peptide derived from human IKK beta
Formulation:	Rabbit IgG in phosphate buffered saline , pH 7.4, 150mM NaCl, 0.02% sodium azide and 50% glycerol.
Concentration:	lot specific
Purification:	Affinity Chromatography
Conjugation:	Unconjugated
Storage:	Store at 4°C short term. Aliquot and store at -20°C long term. Avoid freeze/thaw cycles.
Stability:	1 year
Predicted Protein Size:	87kDa
Gene Name:	inhibitor of kappa light polypeptide gene enhancer in B-cells, kinase beta
Database Link:	<a href="#">Entrez Gene 3551 Human O14920</a>
Background:	Swiss-Prot Acc.O14920.IKK-beta is a kinase of the IKK family. Phosphorylates inhibitors of NF-kappa-B thus leading to the dissociation of the inhibitor/NF-kappa-B complex and ultimately the degradation of the inhibitor. Preferentially found as a heterodimer with IKK-alpha but also as an homodimer.
Synonyms:	FLJ40509; IKK-B; IKK-beta; IKK2; IKKB; MGC131801; NFKBIKB



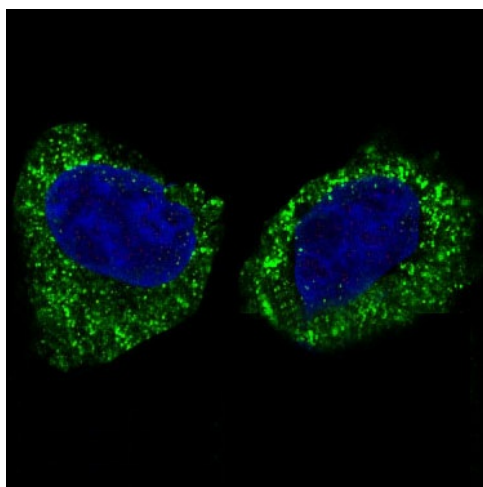
[View online »](#)

**Product images:**

Western blot analysis of IKK beta in HeLa lysates using IKK beta antibody.



Immunohistochemistry analysis of paraffin-embedded Human kidney using IKK beta antibody. High-pressure and temperature Sodium Citrate pH 6.0 was used for antigen retrieval.



Immunofluorescence analysis of IKK beta in HeLa using IKK beta antibody.