

Product datasheet for **TA384505**

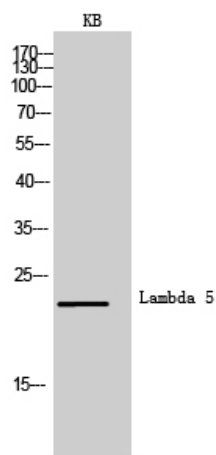
IGLL1 Rabbit Polyclonal Antibody

Product data:

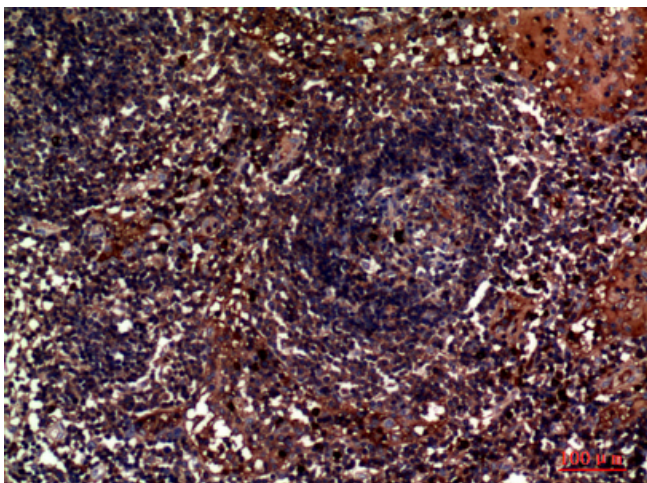
Product Type:	Primary Antibodies
Applications:	ELISA, IHC, WB
Recommended Dilution:	WB: 1/500-1/2000 IHC-p: 1/100-1/300 ELISA: 1/10000
Reactivity:	Human
Host:	Rabbit
Isotype:	IgG
Clonality:	Polyclonal
Immunogen:	The antiserum was produced against synthesized peptide derived from the C-terminal region of human IGLL1. AA range:151-200
Formulation:	Liquid in PBS containing 50% glycerol, 0.5% BSA and 0.02% sodium azide, pH 7.3.
Concentration:	lot specific
Purification:	Affinity Purified
Conjugation:	Unconjugated
Storage:	Store at 4°C short term. Aliquot and store at -20°C long term. Avoid freeze/thaw cycles.
Stability:	1 year
Predicted Protein Size:	Observed MW (kDa):23
Database Link:	P15814
Background:	Swiss-Prot Acc.P15814.



[View online »](#)

Product images:

Western blot analysis of CD179b in KB lysates using CD179b antibody.



Immunohistochemistry analysis of paraffin-embedded Human lymph using CD179b antibody. High-pressure and temperature Sodium Citrate pH 6.0 was used for antigen retrieval.