

## Product datasheet for **TA384503M**

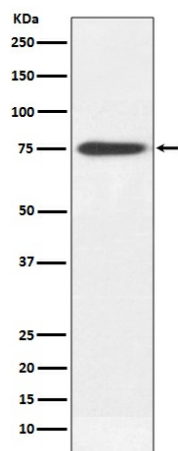
### IGHM Rabbit Polyclonal Antibody

#### Product data:

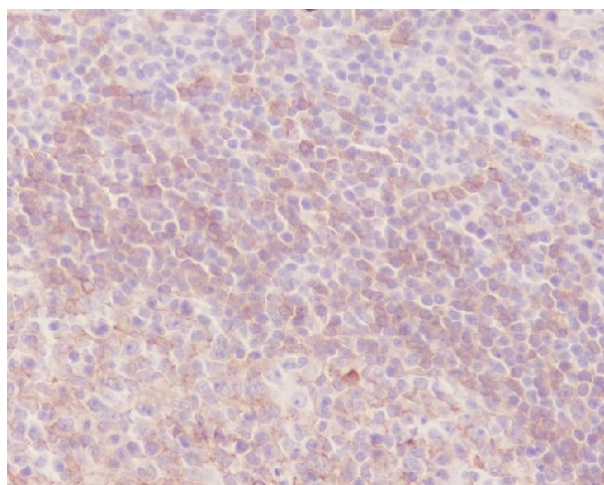
Product Type:	Primary Antibodies
Applications:	IHC, IP, WB
Recommended Dilution:	WB: 1/500-1/2000 IHC: 1/50-1/200 IP: 1/50
Reactivity:	Human
Host:	Rabbit
Isotype:	IgG
Clonality:	Polyclonal
Immunogen:	A synthesized peptide derived from human Human IgM
Formulation:	Rabbit IgG in phosphate buffered saline , pH 7.4, 150mM NaCl, 0.02% sodium azide and 50% glycerol.
Concentration:	lot specific
Purification:	Affinity Chromatography
Conjugation:	Unconjugated
Storage:	Store at 4°C short term. Aliquot and store at -20°C long term. Avoid freeze/thaw cycles.
Stability:	1 year
Predicted Protein Size:	75kDa
Gene Name:	immunoglobulin heavy constant mu
Database Link:	<a href="#">Entrez Gene 3507 Human P01871</a>
Background:	Swiss-Prot Acc.P01871.IgM measurement yields information about the body's immediate resistance and response to infection as well as information related to specific diseases. Decreased levels are associated with immune deficiency states, hereditary deficiencies, and myeloma. Increased levels can be associated with Waldenstrom's macroglobulinemia, chronic infection and hepatocellular disease.

[View online »](#)

## Product images:



Western blot analysis of Human IgM in Human plasma lysates using Human IgM antibody.



Immunohistochemistry analysis of paraffin-embedded Human tonsil using Human IgM antibody. High-pressure and temperature Sodium Citrate pH 6.0 was used for antigen retrieval.