

Product datasheet for **TA384502S**

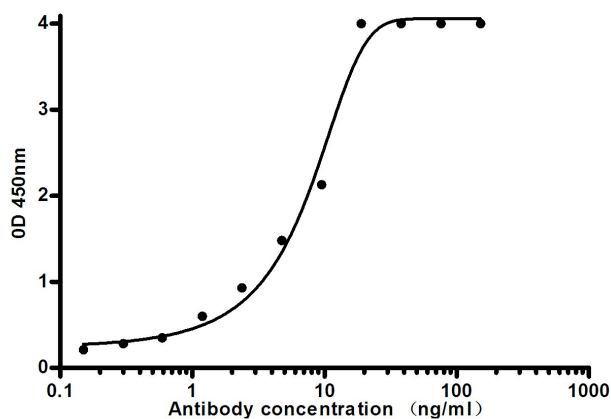
IGHM Mouse Monoclonal Antibody [Clone ID: 3E12-H4-G4]

Product data:

Product Type:	Primary Antibodies
Clone Name:	3E12-H4-G4
Applications:	ELISA, IHC
Recommended Dilution:	ELISA: 1/10000 IHC: 1/200
Reactivity:	Human
Host:	Mouse
Isotype:	IgG2a
Clonality:	Monoclonal
Immunogen:	Purified recombinant full length of human IgM heavy chain protein expressed in E.coli.
Formulation:	Liquid in PBS containing 50% glycerol, 0.5% BSA and 0.03% Proclin 300, pH 7.3.
Concentration:	lot specific
Purification:	Affinity Purified
Conjugation:	Unconjugated
Storage:	Store at 4°C short term. Aliquot and store at -20°C long term. Avoid freeze/thaw cycles.
Stability:	1 year
Predicted Protein Size:	75kDa
Gene Name:	immunoglobulin heavy constant mu
Database Link:	Entrez Gene 3507 Human P01871
Background:	Swiss-Prot Acc.P01871.IgM measurement yields information about the body's immediate resistance and response to infection as well as information related to specific diseases. Decreased levels are associated with immune deficiency states, hereditary deficiencies, and myeloma. Increased levels can be associated with Waldenstrom's macroglobulinemia, chronic infection and hepatocellular disease.



[View online »](#)

Product images:

Indirect ELISA assay for mouse Human IgM antibody. Antigen coating concentration: 2ug/ml.



Immunohistochemical analysis of paraffin-embedded Human tonsils using Human IgM (3E12) antibody. High-pressure and temperature Sodium Citrate pH 6.0 was used for antigen retrieval.