

## Product datasheet for **TA384501**

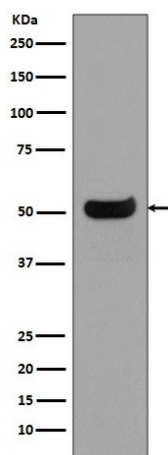
### IGHG4 Rabbit Polyclonal Antibody

#### Product data:

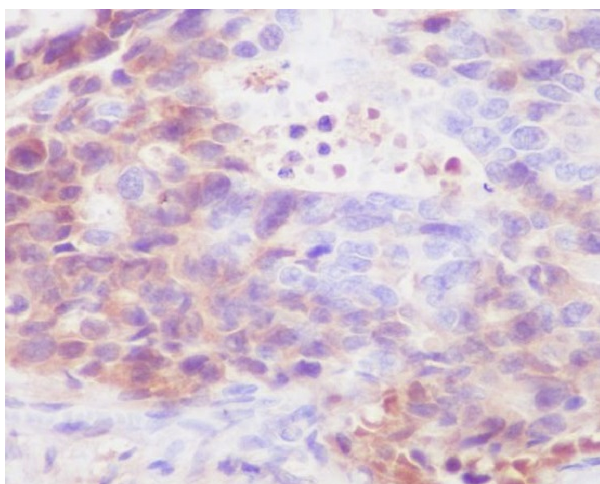
Product Type:	Primary Antibodies
Applications:	IHC, WB
Recommended Dilution:	WB: 1/1000-1/2000 IHC: 1/500-1/1000
Reactivity:	Human
Host:	Rabbit
Isotype:	IgG
Clonality:	Polyclonal
Immunogen:	A synthesized peptide derived from human IgG4
Formulation:	Rabbit IgG in phosphate buffered saline , pH 7.4, 150mM NaCl, 0.02% sodium azide and 50% glycerol.
Concentration:	lot specific
Purification:	Affinity Chromatography
Conjugation:	Unconjugated
Storage:	Store at 4°C short term. Aliquot and store at -20°C long term. Avoid freeze/thaw cycles.
Stability:	1 year
Predicted Protein Size:	36kDa
Database Link:	<a href="#">P01861</a>
Background:	Swiss-Prot Acc.P01861.IgG4 antibodies will dominate the IgG response in schistosomiasis, lymphatic filariasis, and in patients after allergen immunotherapy. Unlike the other IgG subclasses, IgG4 does not activate complement. A combined IgA-IgG4 deficiency has been associated with recurrent pyogenic infections.



[View online »](#)

**Product images:**

Western blot analysis of IgG4 in Human spleen lysates using Human IgG4 antibody.



Immunohistochemistry analysis of paraffin-embedded Human stomach carcinoma using IgG4 antibody. High-pressure and temperature Sodium Citrate pH 6.0 was used for antigen retrieval.