

Product datasheet for **TA384499**

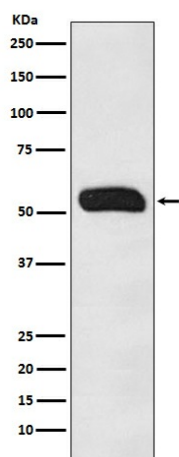
IGHG1 Rabbit Polyclonal Antibody

Product data:

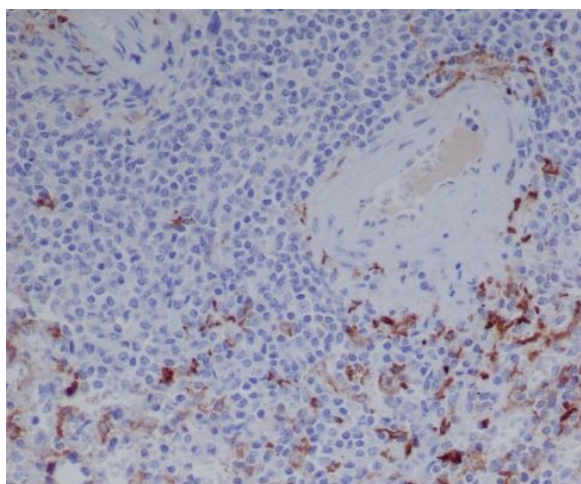
Product Type:	Primary Antibodies
Applications:	IHC, WB
Recommended Dilution:	WB: 1/500-1/2000 IHC: 1/50-1/200
Reactivity:	Human
Host:	Rabbit
Isotype:	IgG
Clonality:	Polyclonal
Immunogen:	A synthesized peptide derived from human Human IgG
Formulation:	Rabbit IgG in phosphate buffered saline , pH 7.4, 150mM NaCl, 0.02% sodium azide and 50% glycerol.
Concentration:	lot specific
Purification:	Affinity Chromatography
Conjugation:	Unconjugated
Storage:	Store at 4°C short term. Aliquot and store at -20°C long term. Avoid freeze/thaw cycles.
Stability:	1 year
Predicted Protein Size:	52kDa
Database Link:	P01857
Background:	Swiss-Prot Acc.P01857,P01859,P01860,P01861.IgG is a monomeric immunoglobulin, built of two heavy chains gamma and two light chains. Each molecule has two antigen binding sites. This is the most abundant immunoglobulin and is approximately equally distributed in blood and in tissue liquids, constituting 75% of serum immunoglobulins in humans.



[View online »](#)

Product images:

Western blot analysis of Human IgG in Human plasma lysates using Human IgG antibody.



Immunohistochemistry analysis of paraffin-embedded Human spleen using Human IgG antibody. High-pressure and temperature Sodium Citrate pH 6.0 was used for antigen retrieval.