

Product datasheet for **TA384494**

eEF1A2 binding protein (IGFN1) Rabbit Polyclonal Antibody

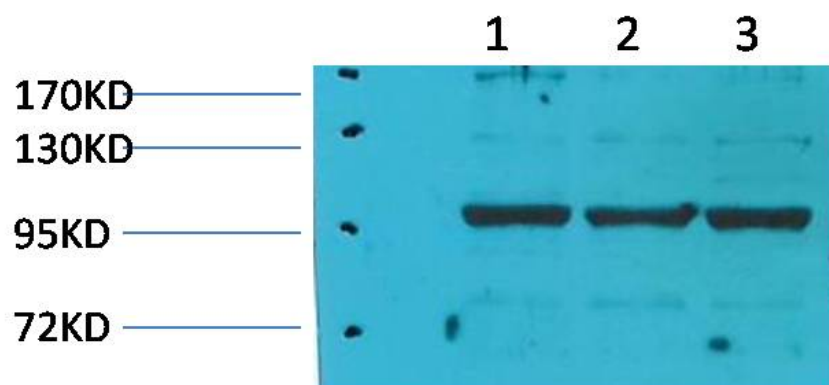
Product data:

Product Type:	Primary Antibodies
Applications:	IHC, WB
Recommended Dilution:	WB: 1/2000-5000 IHC: 1/200-500
Reactivity:	Human, Mouse, Rat
Host:	Rabbit
Isotype:	IgG
Clonality:	Polyclonal
Immunogen:	Recombinant Protein of IGFN1
Formulation:	Liquid in PBS containing 50% glycerol, 0.5% BSA and 0.02% sodium azide, pH 7.3.
Concentration:	lot specific
Purification:	Affinity Purified
Conjugation:	Unconjugated
Storage:	Store at 4°C short term. Aliquot and store at -20°C long term. Avoid freeze/thaw cycles.
Stability:	1 year
Predicted Protein Size:	Observed MW (kDa):115
Gene Name:	immunoglobulin-like and fibronectin type III domain containing 1
Database Link:	Entrez Gene 91156 Human Q86VF2
Background:	Swiss-Prot Acc.Q86VF2.
Synonyms:	DKFZp434B1231; EEF1A2BP1; KYIP1



[View online »](#)

Product images:



Western blot analysis of Elongation Factor 1A2 Binding Protein in Pig Skeletal Muscle, rat Skeletal Muscle, rat Skeletal Muscle lysates using eEF1A2 antibody.