

## Product datasheet for **TA384493M**

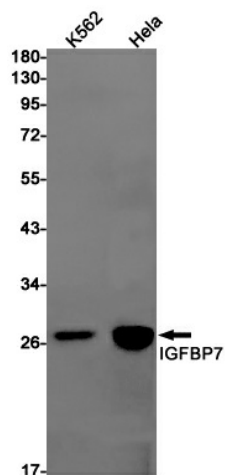
### IGFBP7 Rabbit Monoclonal Antibody [Clone ID: R04-5D9]

#### Product data:

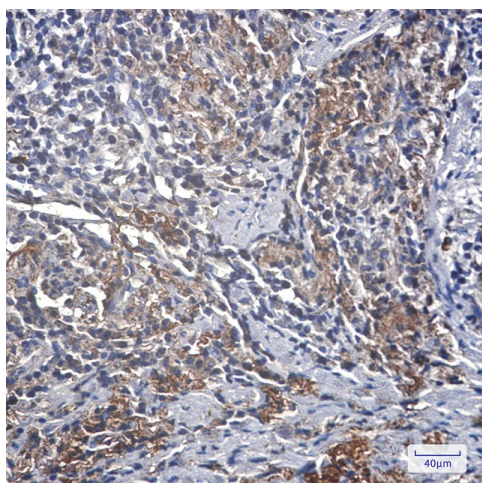
Product Type:	Primary Antibodies
Clone Name:	R04-5D9
Applications:	IF, IHC, WB
Recommended Dilution:	WB: 1/1000-1/2000 IHC: 1/20-1/50 ICC/IF: 1/50-1/100
Reactivity:	Human, Mouse, Rat
Host:	Rabbit
Isotype:	IgG
Clonality:	Monoclonal
Immunogen:	A synthetic peptide of human IGFBP7
Formulation:	50mM Tris-Glycine(pH 7.4), 0.15M NaCl, 40% Glycerol, 0.01% Sodium azide and 0.05% BSA
Concentration:	lot specific
Purification:	Affinity Purified
Conjugation:	Unconjugated
Storage:	Store at 4°C short term. Aliquot and store at -20°C long term. Avoid freeze/thaw cycles.
Stability:	1 year
Predicted Protein Size:	Calculated MW: 29 kDa; Observed MW: 29 kDa
Gene Name:	insulin like growth factor binding protein 7
Database Link:	<a href="#">Entrez Gene 3490 Human Q16270</a>
Background:	Swiss-Prot Acc.Q16270.Binds IGF-I and IGF-II with a relatively low affinity. Stimulates prostacyclin (PGI2) production. Stimulates cell adhesion.
Synonyms:	FSTL2; IBP-7; IGFBP-7; IGFBP-7v; IGFBP-rP1; IGFBPRP1; MAC25; PSF; TAF


[View online »](#)

## Product images:



Western blot analysis of IGFBP7 in K562, HeLa lysates using IGFBP7 antibody.



Immunohistochemistry analysis of paraffin-embedded Human lung cancer using IGFBP7 antibody. High-pressure and temperature Sodium Citrate pH 6.0 was used for antigen retrieval.