

## Product datasheet for **TA384492**

### IGFBP7 Rabbit Polyclonal Antibody

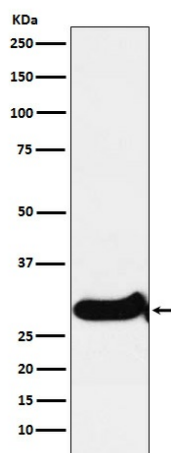
#### Product data:

Product Type:	Primary Antibodies
Applications:	FC, IF, IHC, WB
Recommended Dilution:	WB: 1/500-1/2000 IHC: 1/50-1/200 ICC/IF: 1/50-1/200 FC: 1/200
Reactivity:	Human, Mouse, Rat
Host:	Rabbit
Isotype:	IgG
Clonality:	Polyclonal
Immunogen:	A synthesized peptide derived from human IGFBP7
Formulation:	Rabbit IgG in phosphate buffered saline , pH 7.4, 150mM NaCl, 0.02% sodium azide and 50% glycerol.
Concentration:	lot specific
Purification:	Affinity Chromatography
Conjugation:	Unconjugated
Storage:	Store at 4°C short term. Aliquot and store at -20°C long term. Avoid freeze/thaw cycles.
Stability:	1 year
Predicted Protein Size:	29kDa
Gene Name:	insulin like growth factor binding protein 7
Database Link:	<a href="#">Entrez Gene 3490 Human Q16270</a>
Background:	Swiss-Prot Acc.Q16270.Binds IGF-I and IGF-II with a relatively low affinity. Stimulates prostacyclin (PGI2) production. Stimulates cell adhesion.
Synonyms:	FSTL2; IBP-7; IGFBP-7; IGFBP-7v; IGFBP-rP1; IGFBPRP1; MAC25; PSF; TAF



[View online »](#)

## Product images:



Western blot analysis of IGFBP7 in SW480 lysates using IGFBP7 antibody.