

## Product datasheet for **TA384491M**

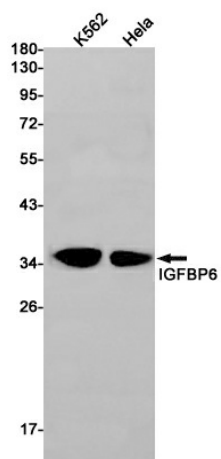
### **IGFBP6 Rabbit Monoclonal Antibody [Clone ID: R02-6G2]**

#### **Product data:**

|                         |                                                                                                                                                                                                                                                                 |
|-------------------------|-----------------------------------------------------------------------------------------------------------------------------------------------------------------------------------------------------------------------------------------------------------------|
| Product Type:           | Primary Antibodies                                                                                                                                                                                                                                              |
| Clone Name:             | R02-6G2                                                                                                                                                                                                                                                         |
| Applications:           | WB                                                                                                                                                                                                                                                              |
| Recommended Dilution:   | WB: 1/1000                                                                                                                                                                                                                                                      |
| Reactivity:             | Human                                                                                                                                                                                                                                                           |
| Host:                   | Rabbit                                                                                                                                                                                                                                                          |
| Isotype:                | IgG                                                                                                                                                                                                                                                             |
| Clonality:              | Monoclonal                                                                                                                                                                                                                                                      |
| Immunogen:              | Recombinant protein of human IGFBP6                                                                                                                                                                                                                             |
| Formulation:            | 50mM Tris-Glycine(pH 7.4), 0.15M NaCl, 40% Glycerol, 0.01% Sodium azide and 0.05% BSA                                                                                                                                                                           |
| Concentration:          | lot specific                                                                                                                                                                                                                                                    |
| Purification:           | Affinity Purified                                                                                                                                                                                                                                               |
| Conjugation:            | Unconjugated                                                                                                                                                                                                                                                    |
| Storage:                | Store at 4°C short term. Aliquot and store at -20°C long term. Avoid freeze/thaw cycles.                                                                                                                                                                        |
| Stability:              | 1 year                                                                                                                                                                                                                                                          |
| Predicted Protein Size: | Calculated MW: 25 kDa; Observed MW: 35 kDa                                                                                                                                                                                                                      |
| Gene Name:              | insulin like growth factor binding protein 6                                                                                                                                                                                                                    |
| Database Link:          | <a href="#">Entrez Gene 3489 Human P24592</a>                                                                                                                                                                                                                   |
| Background:             | Swiss-Prot Acc.P24592.IGF-binding proteins prolong the half-life of the IGFs and have been shown to either inhibit or stimulate the growth promoting effects of the IGFs on cell culture. They alter the interaction of IGFs with their cell surface receptors. |
| Synonyms:               | IBP-6; IBP6; IGFBP-6                                                                                                                                                                                                                                            |

[View online »](#)

## Product images:



Western blot analysis of IGFBP6 in K562, HeLa lysates using IGFBP6 antibody.