

## Product datasheet for **TA384489M**

### IMP3 (IGF2BP3) Rabbit Polyclonal Antibody

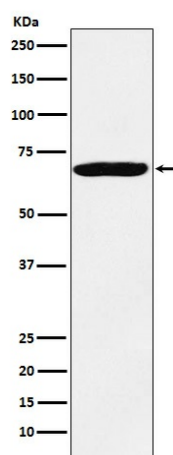
#### Product data:

Product Type:	Primary Antibodies
Applications:	FC, IF, IP, WB
Recommended Dilution:	WB: 1/500-1/2000 ICC/IF: 1/50-1/200 IP: 1/50 FC: 1/50
Reactivity:	Human, Mouse, Rat
Host:	Rabbit
Isotype:	IgG
Clonality:	Polyclonal
Immunogen:	A synthesized peptide derived from human IMP3
Formulation:	Rabbit IgG in phosphate buffered saline , pH 7.4, 150mM NaCl, 0.02% sodium azide and 50% glycerol.
Concentration:	lot specific
Purification:	Affinity Chromatography
Conjugation:	Unconjugated
Storage:	Store at 4°C short term. Aliquot and store at -20°C long term. Avoid freeze/thaw cycles.
Stability:	1 year
Predicted Protein Size:	69kDa
Gene Name:	insulin like growth factor 2 mRNA binding protein 3
Database Link:	<a href="#">Entrez Gene 10643 Human O00425</a>
Background:	Swiss-Prot Acc.O00425.RNA-binding protein that act as a regulator of mRNA translation and stability. Binds to the 5'-UTR of the insulin-like growth factor 2 (IGF2) mRNAs. Binds to sequences in the 3'-UTR of CD44 mRNA.
Synonyms:	CT98; DKFZp686F1078; hKOC; IMP-3; IMP3; KOC1; VICKZ3



[View online »](#)

## Product images:



Western blot analysis of IMP3 in HeLa lysates using IMP3 antibody.