

## Product datasheet for **TA384487**

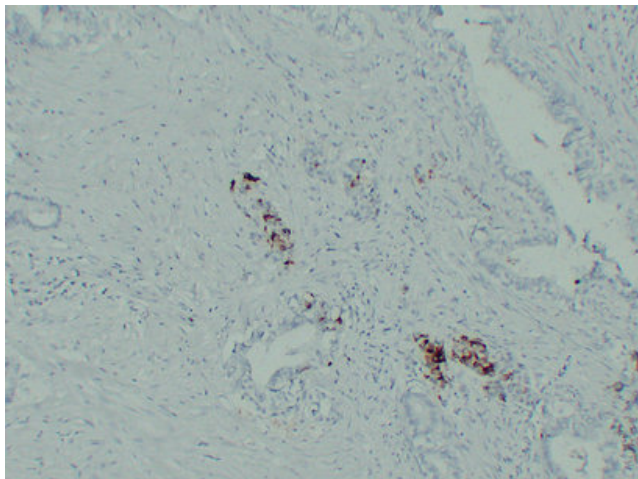
### IGF2 Mouse Monoclonal Antibody [Clone ID: 4F1-6D6-2D10]

#### Product data:

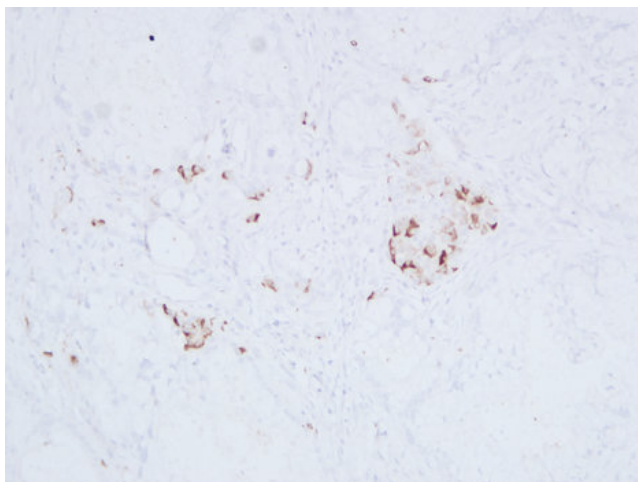
Product Type:	Primary Antibodies
Clone Name:	4F1-6D6-2D10
Applications:	IHC
Recommended Dilution:	IHC-p: 1/100-1/500
Reactivity:	Human
Host:	Mouse
Isotype:	IgG2b, kappa
Clonality:	Monoclonal
Immunogen:	Synthesized peptide derived from human IGF-2
Formulation:	Liquid in PBS containing 50% glycerol, 0.5% BSA and 0.02% sodium azide, pH 7.3.
Concentration:	lot specific
Purification:	Affinity Chromatography
Conjugation:	Unconjugated
Storage:	Store at 4°C short term. Aliquot and store at -20°C long term. Avoid freeze/thaw cycles.
Stability:	1 year
Gene Name:	insulin like growth factor 2
Database Link:	<a href="#">Entrez Gene 3481 Human P01344</a>
Background:	Swiss-Prot Acc.P01344.
Synonyms:	C11orf43; FLJ22066; FLJ44734; IGF-II; INSIGF; OTTHUMP00000011018; OTTHUMP00000011157; pp9974; Somatomedin-A



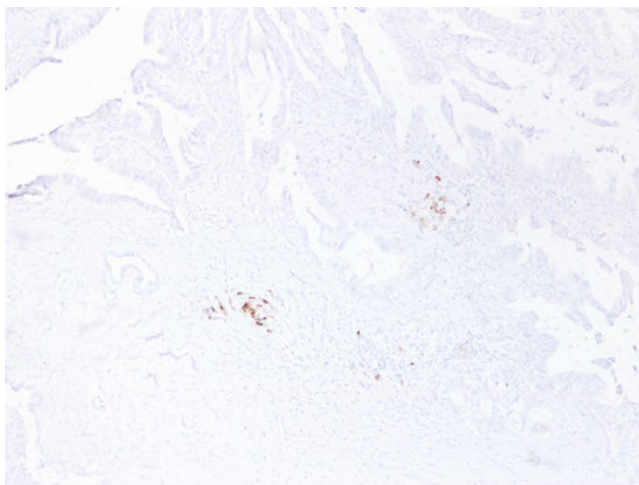
[View online »](#)

**Product images:**

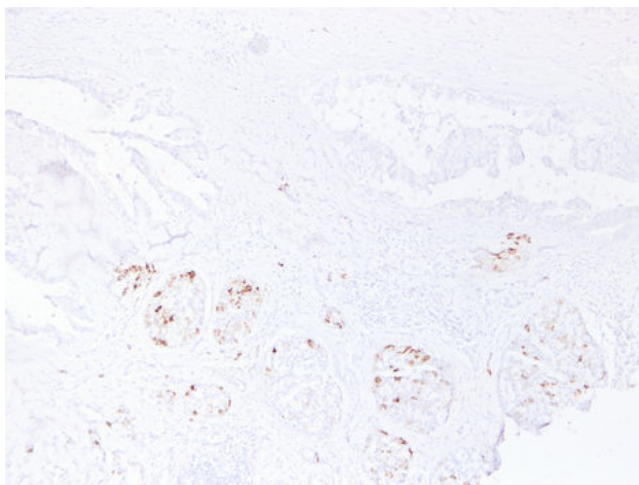
Immunohistochemical analysis of paraffin-embedded Pancreatic carcinoma. 1, Antibody was diluted at 1:200(4°,overnight). 2, TRIS-EDTA of pH8.0 was used for antigen retrieval. 3,Secondary antibody was diluted at 1:200(room temperature, 30min).



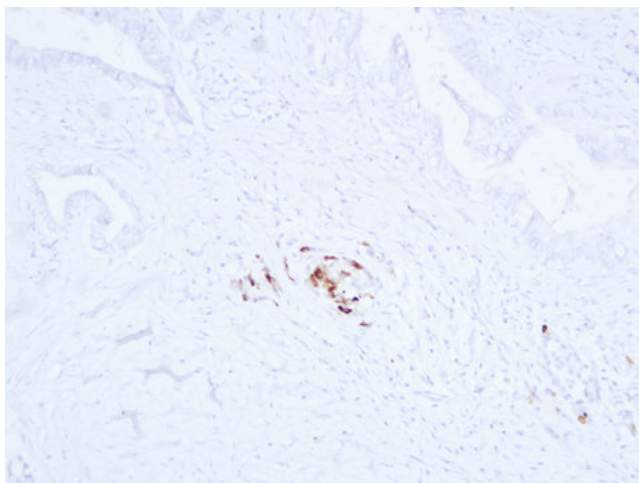
Immunohistochemical analysis of paraffin-embedded Pancreatic carcinoma. 1, Antibody was diluted at 1:200(4°,overnight). 2, TRIS-EDTA of pH8.0 was used for antigen retrieval. 3,Secondary antibody was diluted at 1:200(room temperature, 30min).



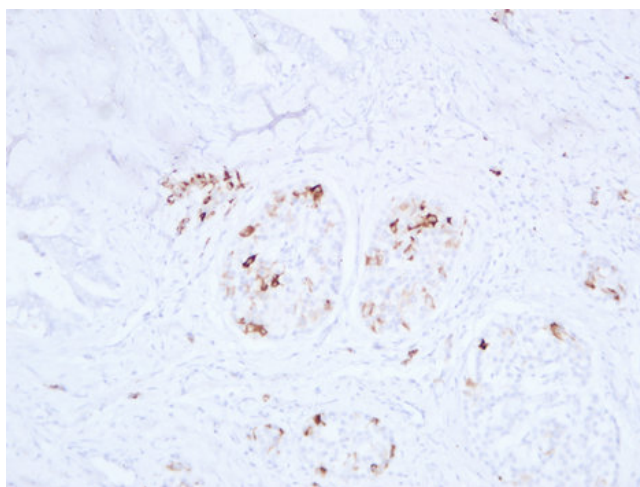
Immunohistochemical analysis of paraffin-embedded Pancreatic carcinoma. 1, Antibody was diluted at 1:200(4°,overnight). 2, TRIS-EDTA of pH8. was used for antigen retrieval. 3,Secondary antibody was diluted at 1:200(room temperature, 30min).



Immunohistochemical analysis of paraffin-embedded Pancreatic carcinoma. 1, Antibody was diluted at 1:200(4°,overnight). 2, TRIS-EDTA of pH8.0 was used for antigen retrieval. 3,Secondary antibody was diluted at 1:200(room temperature, 30min).



Immunohistochemical analysis of paraffin-embedded Pancreatic carcinoma. 1, Antibody was diluted at 1:200(4°,overnight). 2, TRIS-EDTA of pH8.0 was used for antigen retrieval. 3,Secondary antibody was diluted at 1:200(room temperature, 30min).



Immunohistochemical analysis of paraffin-embedded Pancreatic carcinoma. 1, Antibody was diluted at 1:200(4°,overnight). 2, TRIS-EDTA of pH8.0 was used for antigen retrieval. 3,Secondary antibody was diluted at 1:200(room temperature, 30min).