

## Product datasheet for **TA384485**

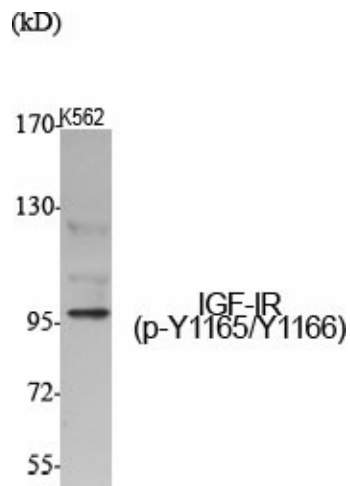
### IGF1 Receptor (IGF1R) Rabbit Polyclonal Antibody

#### Product data:

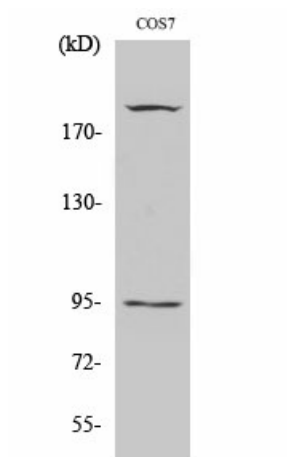
Product Type:	Primary Antibodies
Applications:	ELISA, WB
Recommended Dilution:	WB: 1/500-1/2000 ELISA: 1/20000
Reactivity:	Human, Mouse, Rat, Monkey
Host:	Rabbit
Isotype:	IgG
Clonality:	Polyclonal
Immunogen:	The antiserum was produced against synthesized peptide derived from human IGF1R around the phosphorylation site of Tyr1165/Tyr1166. AA range:1131-1180 (Phosphorylated)
Formulation:	Liquid in PBS containing 50% glycerol, 0.5% BSA and 0.02% sodium azide, pH 7.3.
Concentration:	lot specific
Purification:	Affinity Purified
Conjugation:	Unconjugated
Storage:	Store at 4°C short term. Aliquot and store at -20°C long term. Avoid freeze/thaw cycles.
Stability:	1 year
Predicted Protein Size:	Observed MW (kDa):156
Gene Name:	insulin like growth factor 1 receptor
Database Link:	<a href="#">Entrez Gene 3480 Human P08069</a>
Background:	Swiss-Prot Acc.P08069.
Synonyms:	CD221; IGFIR; IGFR; JTK13; MGC18216; MGC142170; MGC142172



[View online »](#)

**Product images:**


Western blot analysis of Phospho-IGF1 Receptor (Tyr1165/Tyr1166) in various lysates using Phospho-IGF1 Receptor (Tyr1165/Tyr1166) antibody.



Western blot analysis of Phospho-IGF1 Receptor (Tyr1165/Tyr1166) in COS7 lysates using Phospho-IGF1 Receptor (Y1165/Y1166) antibody.