

## Product datasheet for **TA384483**

### IFNAR1 Rabbit Polyclonal Antibody

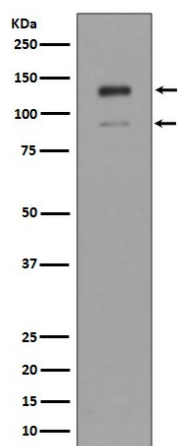
#### Product data:

Product Type:	Primary Antibodies
Applications:	FC, IP, WB
Recommended Dilution:	WB: 1/500-1/2000 IP: 1/50 FC: 1/50
Reactivity:	Human
Host:	Rabbit
Isotype:	IgG
Clonality:	Polyclonal
Immunogen:	A synthesized peptide derived from human IFNAR1
Formulation:	Rabbit IgG in phosphate buffered saline , pH 7.4, 150mM NaCl, 0.02% sodium azide and 50% glycerol.
Concentration:	lot specific
Purification:	Affinity Chromatography
Conjugation:	Unconjugated
Storage:	Store at 4°C short term. Aliquot and store at -20°C long term. Avoid freeze/thaw cycles.
Stability:	1 year
Predicted Protein Size:	90,130kDa
Gene Name:	interferon alpha and beta receptor subunit 1
Database Link:	<a href="#">Entrez Gene 3454 Human P17181</a>
Background:	Swiss-Prot Acc.P17181.Component of the receptor for type I interferons, including interferons alpha, IFNB1 and IFNW1. Functions in general as heterodimer with IFNAR2. Type I interferon binding activates the JAK-STAT signaling cascade, and triggers tyrosine phosphorylation of a number of proteins including JAKs, TYK2, STAT proteins and the IFNR alpha- and beta-subunits themselves. Can form an active IFNB1 receptor by itself and activate a signaling cascade that does not involve activation of the JAK-STAT pathway.
Synonyms:	AVP; IFN-alpha-REC; IFNAR; IFNBR; IFRC



[View online »](#)

## Product images:



Western blot analysis of IFNAR1 in K562 lysates using Interferon alpha/beta Receptor 1 antibody.