

Product datasheet for **TA384482M**

IFITM3 Rabbit Monoclonal Antibody [Clone ID: R09-6I5]

Product data:

Product Type:	Primary Antibodies
Clone Name:	R09-6I5
Applications:	IF, IHC, WB
Recommended Dilution:	WB: 1/1000 IHC: 1/50 ICC/IF: 1/50
Reactivity:	Human
Host:	Rabbit
Isotype:	IgG
Clonality:	Monoclonal
Immunogen:	A synthetic peptide of human Fragilis
Formulation:	50mM Tris-Glycine(pH 7.4), 0.15M NaCl, 40% Glycerol, 0.01% Sodium azide and 0.05% BSA
Concentration:	lot specific
Purification:	Affinity Purified
Conjugation:	Unconjugated
Storage:	Store at 4°C short term. Aliquot and store at -20°C long term. Avoid freeze/thaw cycles.
Stability:	1 year
Predicted Protein Size:	Calculated MW: 15 kDa; Observed MW: 15 kDa
Gene Name:	interferon induced transmembrane protein 3
Database Link:	Entrez Gene 10410 Human Q01628



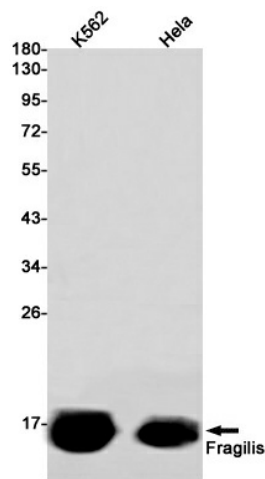
[View online »](#)

Background:

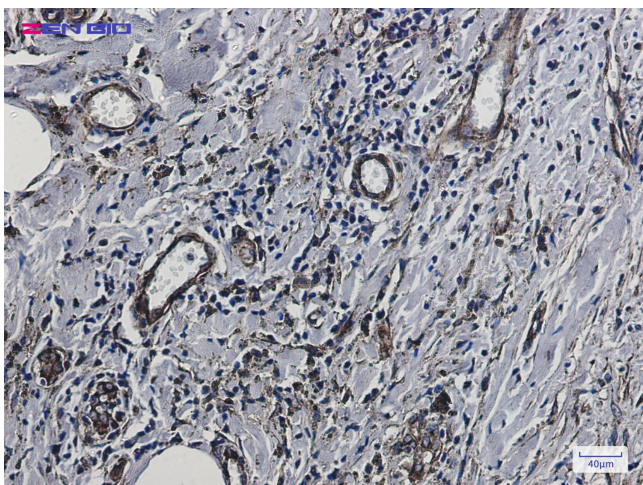
Swiss-Prot Acc.Q01628.IFN-induced antiviral protein which disrupts intracellular cholesterol homeostasis. Inhibits the entry of viruses to the host cell cytoplasm by preventing viral fusion with cholesterol depleted endosomes. May inactivate new enveloped viruses which buds out of the infected cell, by letting them go out with a cholesterol depleted membrane. Active against multiple viruses, including influenza A virus, SARS coronavirus (SARS-CoV), Marburg virus (MARV) and Ebola virus (EBOV), Dengue virus (DNV), West Nile virus (WNV), human immunodeficiency virus type 1 (HIV-1) and vesicular stomatitis virus (VSV). Can inhibit: influenza virus hemagglutinin protein-mediated viral entry, MARV and EBOV GP1,2-mediated viral entry, SARS-CoV S protein-mediated viral entry and VSV G protein-mediated viral entry. Plays a critical role in the structural stability and function of vacuolar ATPase (v-ATPase). Establishes physical contact with the v-ATPase of endosomes which is critical for proper clathrin localization and is also required for the function of the v-ATPase to lower the pH in phagocytic endosomes thus establishing an antiviral state.

Synonyms:

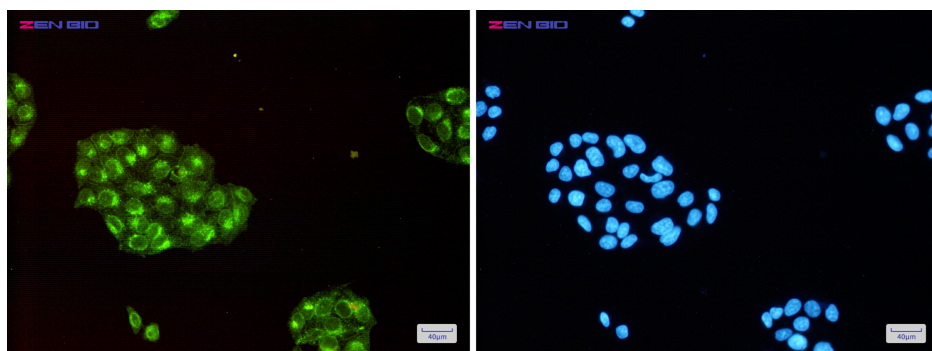
1-8U; interferon-inducible; IP15

Product images:


Western blot analysis of IFITM3 in K562, HeLa lysates using IFITM3 antibody.



Immunohistochemistry of Fragilis in paraffin-embedded Human breast cancer tissue using Fragilis Rabbit mAb at dilution 1/5



Immunocytochemistry of Fragilis(green) in Hela cells using Fragilis Rabbit mAb at dilution 1/50, and DAPI(blue)