

## Product datasheet for **TA384479S**

### IDH2 Rabbit Monoclonal Antibody [Clone ID: R01-7E4]

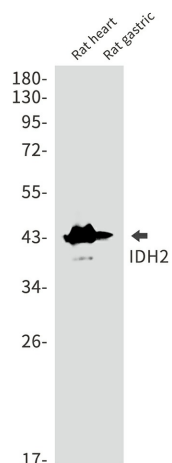
#### Product data:

Product Type:	Primary Antibodies
Clone Name:	R01-7E4
Applications:	IHC, WB
Recommended Dilution:	WB: 1/1000 IHC: 1/500-1/1000
Reactivity:	Human, Mouse, Rat
Host:	Rabbit
Isotype:	IgG
Clonality:	Monoclonal
Immunogen:	A synthetic peptide of human IDH2
Formulation:	50mM Tris-Glycine(pH 7.4), 0.15M NaCl, 40% Glycerol, 0.01% Sodium azide and 0.05% BSA
Concentration:	lot specific
Purification:	Affinity Purified
Conjugation:	Unconjugated
Storage:	Store at 4°C short term. Aliquot and store at -20°C long term. Avoid freeze/thaw cycles.
Stability:	1 year
Predicted Protein Size:	Calculated MW: 51 kDa; Observed MW: 43 kDa
Gene Name:	isocitrate dehydrogenase (NADP(+)) 2, mitochondrial
Database Link:	<a href="#">Entrez Gene 3418 Human P48735</a>
Background:	Swiss-Prot Acc.P48735.Plays a role in intermediary metabolism and energy production. It may tightly associate or interact with the pyruvate dehydrogenase complex.
Synonyms:	ICD-M; IDH; IDHM; IDP; IDPM; mNADP-IDH

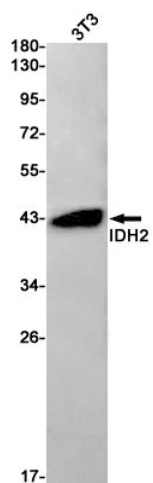


[View online »](#)

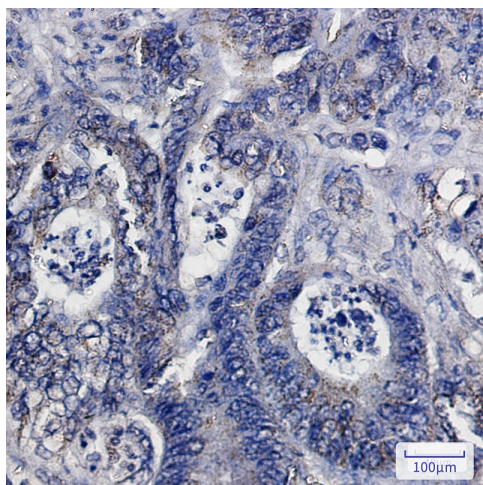
## Product images:



Western blot analysis of IDH2 in rat heart, rat gastric lysates using IDH2 antibody.



Western blot analysis of IDH2 in 3T3 lysates using IDH2 antibody.



Immunohistochemistry analysis of paraffin-embedded Human colon cancer using IDH2 antibody. High-pressure and temperature Sodium Citrate pH 6.0 was used for antigen retrieval.