

## Product datasheet for **TA384477S**

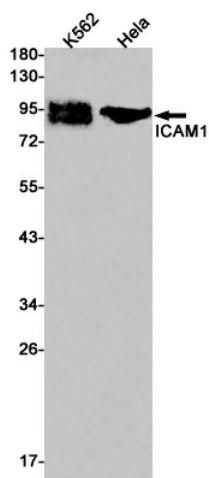
### ICAM1 Rabbit Monoclonal Antibody [Clone ID: R09-7A9]

#### Product data:

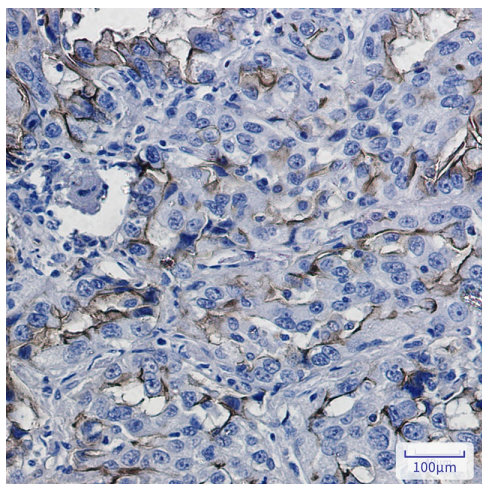
Product Type:	Primary Antibodies
Clone Name:	R09-7A9
Applications:	IHC, IP, WB
Recommended Dilution:	WB: 1/1000 IHC: 1/50-1/100 IP: 1/20
Reactivity:	Human
Host:	Rabbit
Isotype:	IgG
Clonality:	Monoclonal
Immunogen:	Recombinant protein of human ICAM1
Formulation:	50mM Tris-Glycine(pH 7.4), 0.15M NaCl, 40% Glycerol, 0.01% Sodium azide and 0.05% BSA
Concentration:	lot specific
Purification:	Affinity Purified
Conjugation:	Unconjugated
Storage:	Store at 4°C short term. Aliquot and store at -20°C long term. Avoid freeze/thaw cycles.
Stability:	1 year
Predicted Protein Size:	Calculated MW: 58 kDa; Observed MW: 89,92 kDa
Gene Name:	intercellular adhesion molecule 1
Database Link:	<a href="#">Entrez Gene 3383 Human P05362</a>
Background:	Swiss-Prot Acc.P05362.ICAM proteins are ligands for the leukocyte adhesion protein LFA-1 (integrin alpha-L/beta-2). During leukocyte trans-endothelial migration, ICAM1 engagement promotes the assembly of endothelial apical cups through ARHGEF26/SGEF and RHOG activation.
Synonyms:	BB2; CD54; ICAM-1; P3.58



[View online »](#)

**Product images:**

Western blot analysis of ICAM1 in K562, HeLa lysates using ICAM1 antibody.



Immunohistochemistry analysis of paraffin-embedded Human lung cancer using ICAM1 antibody. High-pressure and temperature Sodium Citrate pH 6.0 was used for antigen retrieval.