

Product datasheet for TA384477M

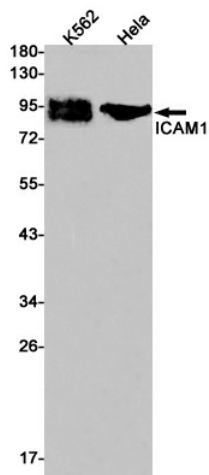
ICAM1 Rabbit Monoclonal Antibody [Clone ID: R09-7A9]

Product data:

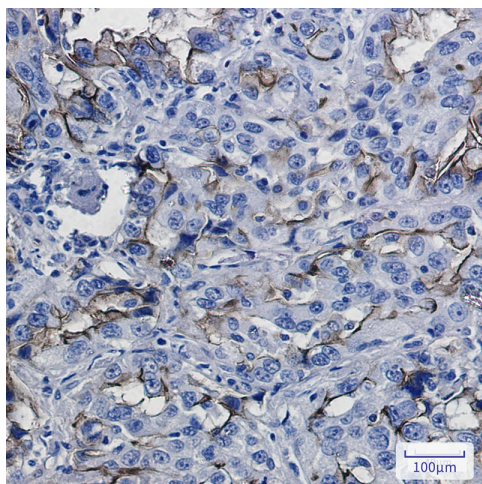
| | |
|-------------------------|--|
| Product Type: | Primary Antibodies |
| Clone Name: | R09-7A9 |
| Applications: | IHC, IP, WB |
| Recommended Dilution: | WB: 1/1000 IHC: 1/50-1/100 IP: 1/20 |
| Reactivity: | Human |
| Host: | Rabbit |
| Isotype: | IgG |
| Clonality: | Monoclonal |
| Immunogen: | Recombinant protein of human ICAM1 |
| Formulation: | 50mM Tris-Glycine(pH 7.4), 0.15M NaCl, 40% Glycerol, 0.01% Sodium azide and 0.05% BSA |
| Concentration: | lot specific |
| Purification: | Affinity Purified |
| Conjugation: | Unconjugated |
| Storage: | Store at 4°C short term. Aliquot and store at -20°C long term. Avoid freeze/thaw cycles. |
| Stability: | 1 year |
| Predicted Protein Size: | Calculated MW: 58 kDa; Observed MW: 89,92 kDa |
| Gene Name: | intercellular adhesion molecule 1 |
| Database Link: | Entrez Gene 3383 Human P05362 |
| Background: | Swiss-Prot Acc.P05362.ICAM proteins are ligands for the leukocyte adhesion protein LFA-1 (integrin alpha-L/beta-2). During leukocyte trans-endothelial migration, ICAM1 engagement promotes the assembly of endothelial apical cups through ARHGEF26/SGEF and RHOG activation. |
| Synonyms: | BB2; CD54; ICAM-1; P3.58 |


[View online »](#)

Product images:



Western blot analysis of ICAM1 in K562, HeLa lysates using ICAM1 antibody.



Immunohistochemistry analysis of paraffin-embedded Human lung cancer using ICAM1 antibody. High-pressure and temperature Sodium Citrate pH 6.0 was used for antigen retrieval.