

Product datasheet for **TA384466**

Hsc70 (HSPA8) Rabbit Polyclonal Antibody

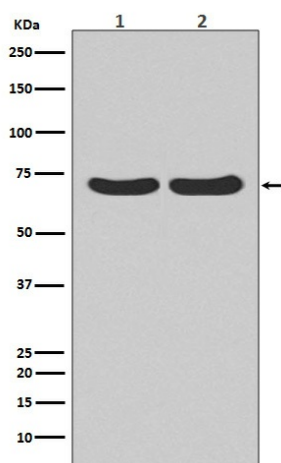
Product data:

Product Type:	Primary Antibodies
Applications:	FC, IF, IHC, IP, WB
Recommended Dilution:	WB: 1/500-1/2000 IHC: 1/50-1/200 ICC/IF: 1/50-1/200 IP: 1/20 FC: 1/30
Reactivity:	Human, Mouse, Rat
Host:	Rabbit
Isotype:	IgG
Clonality:	Polyclonal
Immunogen:	A synthesized peptide derived from human Hsc70
Formulation:	Rabbit IgG in phosphate buffered saline , pH 7.4, 150mM NaCl, 0.02% sodium azide and 50% glycerol.
Concentration:	lot specific
Purification:	Affinity Chromatography
Conjugation:	Unconjugated
Storage:	Store at 4°C short term. Aliquot and store at -20°C long term. Avoid freeze/thaw cycles.
Stability:	1 year
Predicted Protein Size:	70kDa
Gene Name:	heat shock protein family A (Hsp70) member 8
Database Link:	Entrez Gene 3312 Human P11142
Background:	Swiss-Prot Acc.P11142.Acts as a repressor of transcriptional activation. Inhibits the transcriptional coactivator activity of CITED1 on Smad-mediated transcription. Chaperone. Component of the PRP19-CDC5L complex that forms an integral part of the spliceosome and is required for activating pre-mRNA splicing.
Synonyms:	HSC54; HSC70; HSC71; HSP71; HSP73; HSPA10; LAP1; MGC29929; MGC131511; NIP71

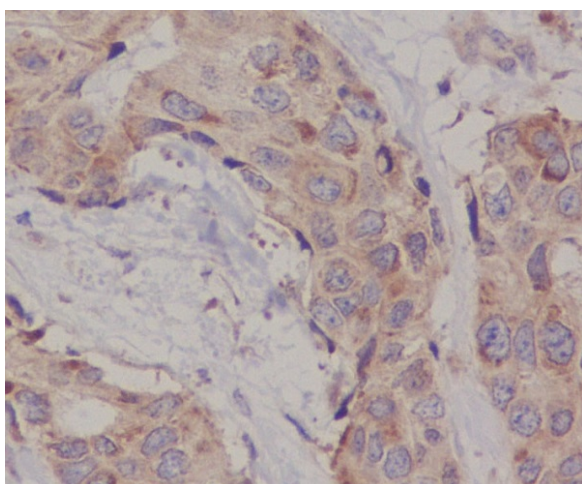


[View online »](#)

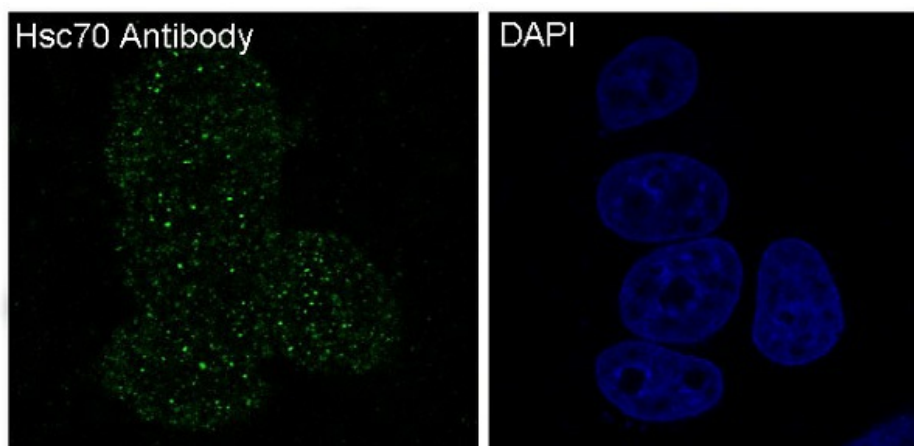
Product images:



Western blot analysis of Calreticulin in (1) HeLa lysates; (2) C6 lysates using Hsc70 antibody.



Immunohistochemistry analysis of paraffin-embedded Human breast cancer using Hsc70 antibody. High-pressure and temperature Sodium Citrate pH 6.0 was used for antigen retrieval.



Immunofluorescence analysis of Hsc70 in MCF-7 using Hsc70 antibody.