

## Product datasheet for **TA384461M**

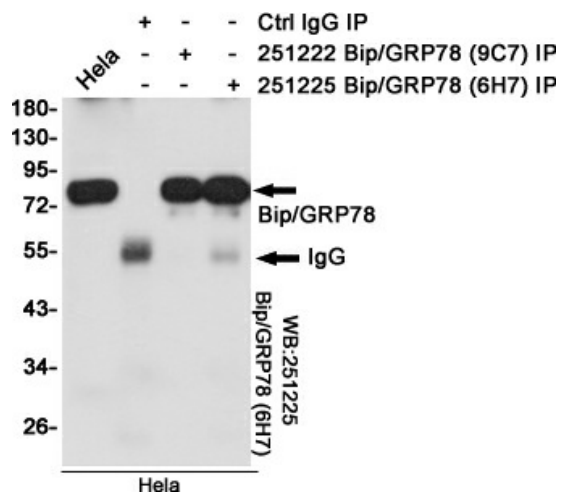
### GRP78 (HSPA5) Mouse Monoclonal Antibody [Clone ID: 9C7-8D10-7A5]

#### Product data:

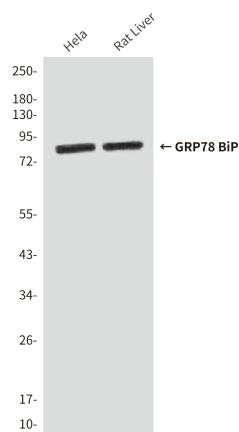
Product Type:	Primary Antibodies
Clone Name:	9C7-8D10-7A5
Applications:	IHC, WB
Recommended Dilution:	WB: 1/1000-2000 IHC: 1/100-200
Reactivity:	Human, Rat
Host:	Mouse
Isotype:	IgG1
Clonality:	Monoclonal
Immunogen:	Synthetic peptide conjugated to KLH.
Formulation:	Liquid in PBS containing 50% glycerol, 0.5% BSA and 0.03% Proclin 300, pH 7.3.
Concentration:	lot specific
Purification:	Affinity Purified
Conjugation:	Unconjugated
Storage:	Store at 4°C short term. Aliquot and store at -20°C long term. Avoid freeze/thaw cycles.
Stability:	1 year
Predicted Protein Size:	78kDa
Gene Name:	heat shock protein family A (Hsp70) member 5
Database Link:	<a href="#">Entrez Gene 3309 Human P11021</a>
Background:	Swiss-Prot Acc.P11021.Plays a role in facilitating the assembly of multimeric protein complexes inside the endoplasmic reticulum. Involved in the correct folding of proteins and degradation of misfolded proteins via its interaction with DNAJC10, probably to facilitate the release of DNAJC10 from its substrate .
Synonyms:	BiP; FLJ26106; GRP78; MIF2

[View online »](#)

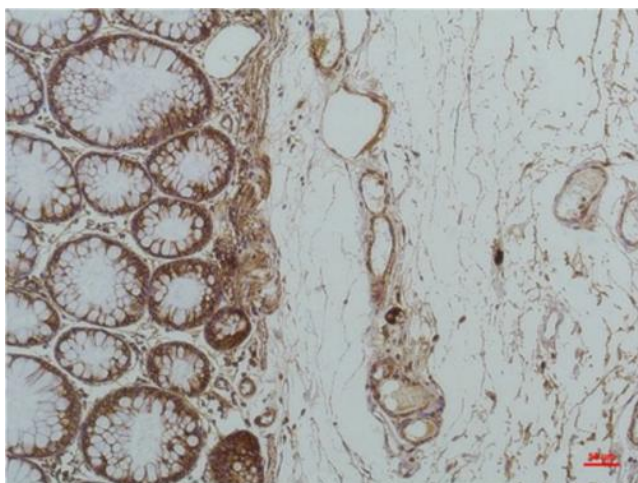
## Product images:



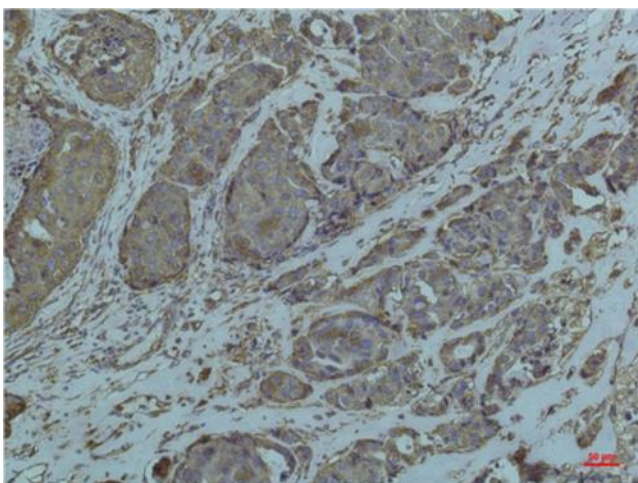
Immunoprecipitation analysis of HeLa cell lysates using Bip/GRP78 (9C7) Mouse mAb.



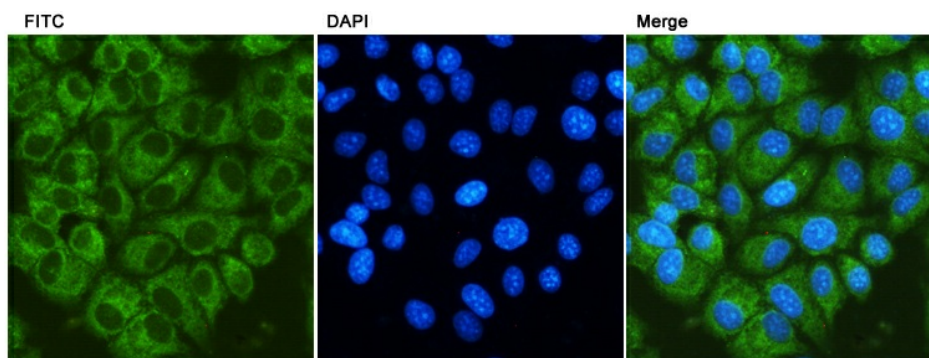
Western blot analysis of GRP78 BiP (9C7) in HeLa, rat Liver lysates using GRP78/Bip antibody.



Immunohistochemical analysis of paraffin-embedded Human Colon Carcinoma using GRP78/BipMouse mAb diluted at 1:200.



Immunohistochemical analysis of paraffin-embedded Human Breast Carcinoma using GRP78/BipMouse mAb diluted at 1:200.



Immunocytochemistry staining of HeLa cells using Bip/GRP78 (9C7) Mouse mAb(dilution 1:100).