

Product datasheet for **TA384452S**

p21 Ras (HRAS) Rabbit Monoclonal Antibody [Clone ID: R09-7E8]

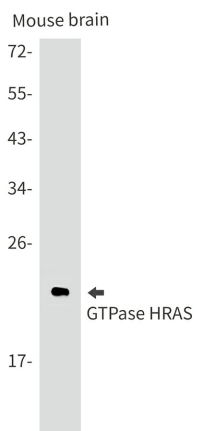
Product data:

Product Type:	Primary Antibodies
Clone Name:	R09-7E8
Applications:	IF, IP, WB
Recommended Dilution:	WB: 1/1000 ICC/IF: 1/50 IP: 1/20
Reactivity:	Human, Mouse, Rat
Host:	Rabbit
Isotype:	IgG
Clonality:	Monoclonal
Immunogen:	Recombinant protein of human RAS
Formulation:	50mM Tris-Glycine(pH 7.4), 0.15M NaCl, 40% Glycerol, 0.01% Sodium azide and 0.05% BSA
Concentration:	lot specific
Purification:	Affinity Purified
Conjugation:	Unconjugated
Storage:	Store at 4°C short term. Aliquot and store at -20°C long term. Avoid freeze/thaw cycles.
Stability:	1 year
Predicted Protein Size:	Calculated MW: 21 kDa; Observed MW: 21 kDa
Gene Name:	Harvey rat sarcoma viral oncogene homolog
Database Link:	Entrez Gene 3265 Human P01111
Background:	Swiss-Prot Acc.P01111.Ras proteins bind GDP/GTP and possess intrinsic GTPase activity.MiscellaneousMutations which change AA 12, 13 or 61 activate the potential of Ras to transform cultured cells and are implicated in a variety of human tumors.
Synonyms:	C-BAS/HAS; C-H-RAS; C-HA-RAS1; CTLO; H-Ras-1; H-RASIDX; Ha-Ras; HAMSIV; HRAS1; K-RAS; N-RAS; OTTHUMP00000162769; OTTHUMP00000166053; OTTHUMP00000166055; p21ras; RASH1

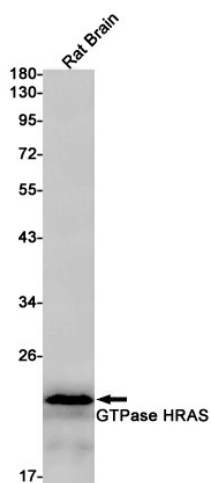


[View online »](#)

Product images:



Western blot analysis of GTPase HRAS in mouse brain lysates using GTPase HRAS antibody.



Western blot analysis of RAS in rat Brain lysates using RAS antibody.