

## Product datasheet for **TA384451S**

### p21 Ras (HRAS) Rabbit Polyclonal Antibody

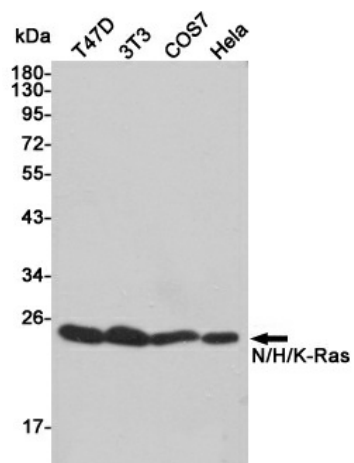
#### Product data:

Product Type:	Primary Antibodies
Applications:	ELISA, IHC, WB
Recommended Dilution:	WB: 1/500-1/2000 IHC: 1/100-1/300 ELISA: 1/20000
Reactivity:	Human, Mouse, Rat
Host:	Rabbit
Isotype:	IgG
Clonality:	Polyclonal
Immunogen:	The antiserum was produced against synthesized peptide derived from human RASH/RASK. AA range:1-50
Formulation:	Liquid in PBS containing 50% glycerol, 0.5% BSA and 0.02% sodium azide, pH 7.3.
Concentration:	lot specific
Purification:	Affinity Purified
Conjugation:	Unconjugated
Storage:	Store at 4°C short term. Aliquot and store at -20°C long term. Avoid freeze/thaw cycles.
Stability:	1 year
Predicted Protein Size:	Observed MW (kDa):21
Gene Name:	Harvey rat sarcoma viral oncogene homolog
Database Link:	<a href="#">Entrez Gene 3265 Human P01111</a>
Background:	Swiss-Prot Acc.P01111.
Synonyms:	C-BAS/HAS; C-H-RAS; C-HA-RAS1; CTLO; H-Ras-1; H-RASIDX; Ha-Ras; HAMSIV; HRAS1; K-RAS; N-RAS; OTTHUMP00000162769; OTTHUMP00000166053; OTTHUMP00000166055; p21ras; RASH1



[View online »](#)

## Product images:



Western blot analysis of N/H/K-Ras in T47D, 3T3, COS7 and HeLa lysates using N/H/K-Ras antibody.