

Product datasheet for **TA384440**

HMGB2 Rabbit Polyclonal Antibody

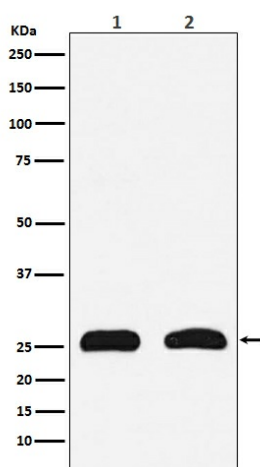
Product data:

Product Type:	Primary Antibodies
Applications:	IF, IHC, IP, WB
Recommended Dilution:	WB: 1/1000-1/5000 IHC: 1/50-1/200 ICC/IF: 1/50-1/200 IP: 1/50
Reactivity:	Human, Mouse, Rat
Host:	Rabbit
Isotype:	IgG
Clonality:	Polyclonal
Immunogen:	A synthesized peptide derived from human HMGB2
Formulation:	Rabbit IgG in phosphate buffered saline , pH 7.4, 150mM NaCl, 0.02% sodium azide and 50% glycerol.
Concentration:	lot specific
Purification:	Affinity Chromatography
Conjugation:	Unconjugated
Storage:	Store at 4°C short term. Aliquot and store at -20°C long term. Avoid freeze/thaw cycles.
Stability:	1 year
Predicted Protein Size:	24kDa
Gene Name:	high mobility group box 2
Database Link:	Entrez Gene 3148 Human P26583
Background:	Swiss-Prot Acc.P26583.DNA binding proteins that associates with chromatin and has the ability to bend DNA. Binds preferentially single-stranded DNA. Involved in V(D)J recombination by acting as a cofactor of the RAG complex. Acts by stimulating cleavage and RAG protein binding at the 23 bp spacer of conserved recombination signal sequences (RSS).
Synonyms:	HMG-2; HMG2



[View online »](#)

Product images:



Western blot analysis of HMGB2 in (1) HeLa lysates; (2) PC-12 lysates using HMGB2 antibody.