

## Product datasheet for **TA384439S**

### HMG1 (HMGB1) Rabbit Monoclonal Antibody [Clone ID: R07-2D8]

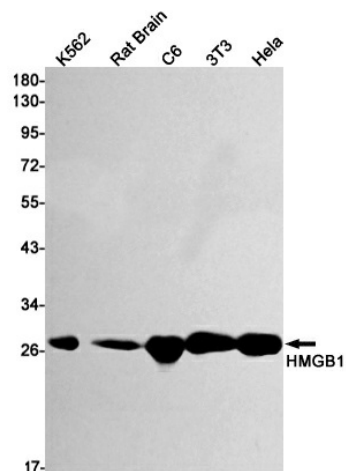
#### Product data:

Product Type:	Primary Antibodies
Clone Name:	R07-2D8
Applications:	IHC, WB
Recommended Dilution:	WB: 1/2000 IHC: 1/50
Reactivity:	Human, Mouse, Rat
Host:	Rabbit
Isotype:	IgG
Clonality:	Monoclonal
Immunogen:	A synthetic peptide of human HMGB1
Formulation:	50mM Tris-Glycine(pH 7.4), 0.15M NaCl, 40% Glycerol, 0.01% Sodium azide and 0.05% BSA
Concentration:	lot specific
Purification:	Affinity Purified
Conjugation:	Unconjugated
Storage:	Store at 4°C short term. Aliquot and store at -20°C long term. Avoid freeze/thaw cycles.
Stability:	1 year
Predicted Protein Size:	Calculated MW: 25 kDa; Observed MW: 25 kDa
Gene Name:	high mobility group box 1
Database Link:	<a href="#">Entrez Gene 3146 Human P09429</a>
Background:	Swiss-Prot Acc.P09429.
Synonyms:	Amphoterin; DKFZp686A04236; HMG-1; HMG1; HMG3; OTTHUMP00000018196; OTTHUMP00000190860; OTTHUMP00000200117; SBP-1

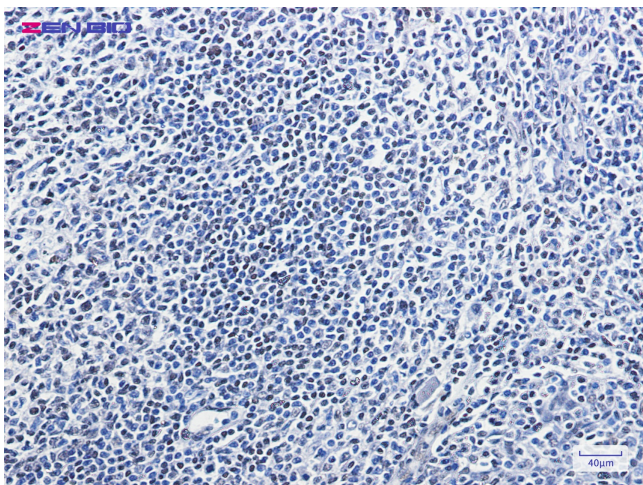


[View online »](#)

## Product images:



Western blot analysis of HMGB1 in K562, rat Brain, C6, 3T3, HeLa lysates using HMGB1 antibody.



Immunohistochemistry of HMGB1 in paraffin-embedded Human tonsil using HMGB1 Rabbit mAb at dilution 1/100