

Product datasheet for **TA384437S**

HLTF Rabbit Monoclonal Antibody [Clone ID: R03-1E4]

Product data:

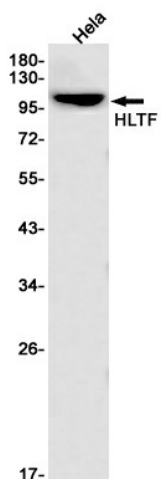
Product Type:	Primary Antibodies
Clone Name:	R03-1E4
Applications:	IF, WB
Recommended Dilution:	WB: 1/2000-1/10000 ICC/IF: 1/20
Reactivity:	Human
Host:	Rabbit
Isotype:	IgG
Clonality:	Monoclonal
Immunogen:	A synthetic peptide of human HLTF
Formulation:	50mM Tris-Glycine(pH 7.4), 0.15M NaCl, 40% Glycerol, 0.01% Sodium azide and 0.05% BSA
Concentration:	lot specific
Purification:	Affinity Purified
Conjugation:	Unconjugated
Storage:	Store at 4°C short term. Aliquot and store at -20°C long term. Avoid freeze/thaw cycles.
Stability:	1 year
Predicted Protein Size:	Calculated MW: 114 kDa; Observed MW: 114 kDa
Gene Name:	helicase-like transcription factor
Database Link:	Entrez Gene 6596 Human Q14527
Background:	Swiss-Prot Acc.Q14527.Has both helicase and E3 ubiquitin ligase activities. Possesses intrinsic ATP-dependent nucleosome-remodeling activity; This activity may be required for transcriptional activation or repression of specific target promoters . These may include the SERPINE1 and HIV-1 promoters and the SV40 enhancer, to which this protein can bind directly. Plays a role in error-free postreplication repair (PRR) of damaged DNA and maintains genomic stability through acting as a ubiquitin ligase for 'Lys-63'-linked polyubiquitination of chromatin-bound PCNA.



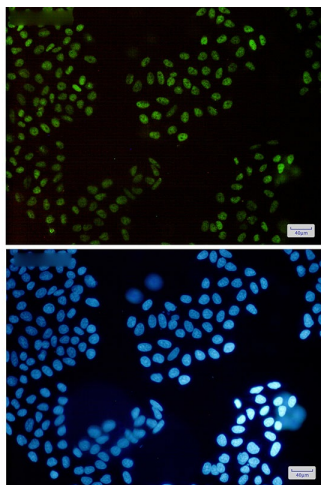
[View online »](#)

Synonyms: HIP116; HIP116A; HLTF1; RNF80; SMARCA3; SNF2L3; ZBU1

Product images:



Western blot analysis of HLTF in HeLa lysates using HLTF antibody.



Immunocytochemistry analysis of HLTF(green) in HeLa using HLTF antibody, and DAPI(blue)