

Product datasheet for **TA384435S**

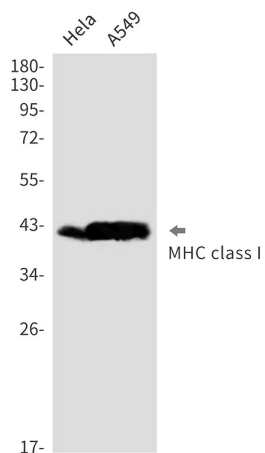
HLA-A Rabbit Monoclonal Antibody [Clone ID: R02-5C6]

Product data:

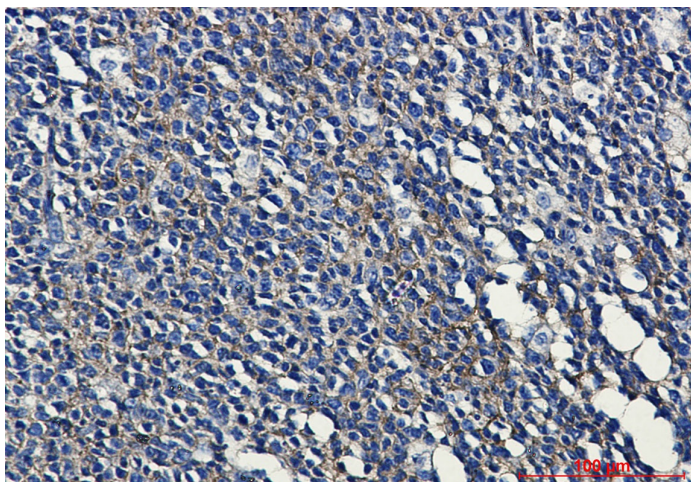
Product Type:	Primary Antibodies
Clone Name:	R02-5C6
Applications:	IHC, WB
Recommended Dilution:	WB: 1/500-1/2000 IHC: 1/50-1/200
Reactivity:	Human
Host:	Rabbit
Isotype:	IgG
Clonality:	Monoclonal
Immunogen:	A synthesized peptide derived from human MHC class I
Formulation:	50mM Tris-Glycine(pH 7.4), 0.15M NaCl, 40% Glycerol, 0.01% Sodium azide and 0.05% BSA
Concentration:	lot specific
Purification:	Affinity Purified
Conjugation:	Unconjugated
Storage:	Store at 4°C short term. Aliquot and store at -20°C long term. Avoid freeze/thaw cycles.
Stability:	1 year
Predicted Protein Size:	41kDa
Database Link:	P30450
Background:	Swiss-Prot Acc.P30443,P01889,P01891,P01892,P13746,P16188,P30450.Major histocompatibility complex (MHC) molecules form an integral part of the immune response system. They are cell-surface receptors that bind peptides and present them to T lymphocytes. HLA-A, -B and -C encode membrane anchored heavy chains which heterodimerize with a light chain (b-2-Microglobulin) to form MHC-I. Polymorphisms yield hundreds of HLA-A, -B and -C alleles.



[View online »](#)

Product images:

Western blot analysis of MHC class I in HeLa, A549 lysates using MHC Class I antibody.



Immunohistochemistry analysis of paraffin-embedded Human tonsil using MHC class I antibody. High-pressure and temperature Sodium Citrate pH 6.0 was used for antigen retrieval.