

Product datasheet for **TA384434**

HLA-A Rabbit Polyclonal Antibody

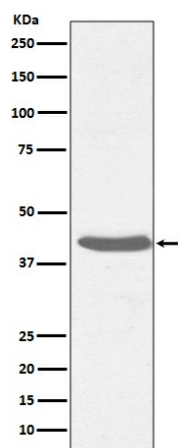
Product data:

Product Type:	Primary Antibodies
Applications:	FC, IF, IHC, WB
Recommended Dilution:	WB: 1/500-1/2000 IHC: 1/50-1/200 ICC/IF: 1/50-1/200 FC: 1/50
Reactivity:	Human
Host:	Rabbit
Isotype:	IgG
Clonality:	Polyclonal
Immunogen:	A synthesized peptide derived from human MHC class I
Formulation:	Rabbit IgG in phosphate buffered saline , pH 7.4, 150mM NaCl, 0.02% sodium azide and 50% glycerol.
Concentration:	lot specific
Purification:	Affinity Chromatography
Conjugation:	Unconjugated
Storage:	Store at 4°C short term. Aliquot and store at -20°C long term. Avoid freeze/thaw cycles.
Stability:	1 year
Predicted Protein Size:	41kDa
Database Link:	P30443
Background:	Swiss-Prot Acc.P30443,P01889,P01891,P01892,P13746,P16188,P30450.Major histocompatibility complex (MHC) molecules form an integral part of the immune response system. They are cell-surface receptors that bind peptides and present them to T lymphocytes. HLA-A, -B and -C encode membrane anchored heavy chains which heterodimerize with a light chain (b-2-Microglobulin) to form MHC-I. Polymorphisms yield hundreds of HLA-A, -B and -C alleles.



[View online »](#)

Product images:



Western blot analysis of MHC class I in Raji lysates using MHC Class I antibody.