

Product datasheet for **TA384432S**

Hexokinase II (HK2) Rabbit Monoclonal Antibody [Clone ID: R06-4F4]

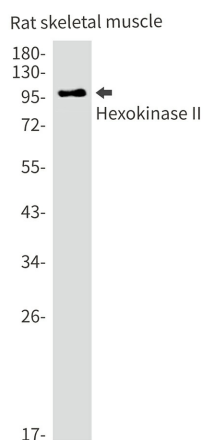
Product data:

| | |
|-------------------------|-------------------------------------------------------------------------------------------------------------------------------------------------------------------|
| Product Type: | Primary Antibodies |
| Clone Name: | R06-4F4 |
| Applications: | IHC, IP, WB |
| Recommended Dilution: | WB: 1/1000 IHC: 1/100 IP: 1/20 |
| Reactivity: | Human, Rat, Hamster |
| Host: | Rabbit |
| Isotype: | IgG |
| Clonality: | Monoclonal |
| Immunogen: | Recombinant protein of human Hexokinase II |
| Formulation: | 50mM Tris-Glycine(pH 7.4), 0.15M NaCl, 40% Glycerol, 0.01% Sodium azide and 0.05% BSA |
| Concentration: | lot specific |
| Purification: | Affinity Purified |
| Conjugation: | Unconjugated |
| Storage: | Store at 4°C short term. Aliquot and store at -20°C long term. Avoid freeze/thaw cycles. |
| Stability: | 1 year |
| Predicted Protein Size: | Calculated MW: 102 kDa; Observed MW: 102 kDa |
| Gene Name: | hexokinase 2 |
| Database Link: | Entrez Gene 3099 Human P52789 |
| Background: | Swiss-Prot Acc.P52789.MiscellaneousIn vertebrates there are four major glucose-phosphorylating isoenzymes, designated hexokinase I, II, III and IV (glucokinase). |
| Synonyms: | DKFZp686M1669; HKII; HXK2 |

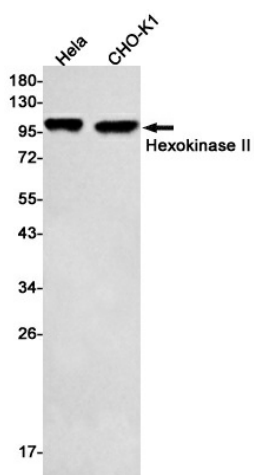


[View online »](#)

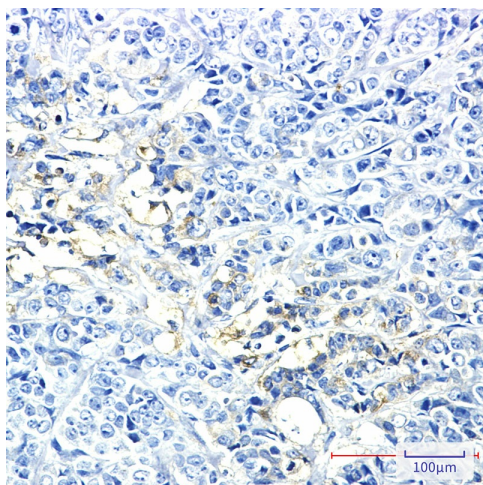
Product images:



Western blot analysis of Hexokinase II in rat skeletal muscle lysates using Hexokinase II antibody.



Western blot analysis of Hexokinase II in HeLa, CHO-K1 lysates using Hexokinase II antibody.



Immunohistochemistry analysis of paraffin-embedded Human breast cancer using Hexokinase II antibody. High-pressure and temperature Sodium Citrate pH 6.0 was used for antigen retrieval.