

Product datasheet for TA384431M

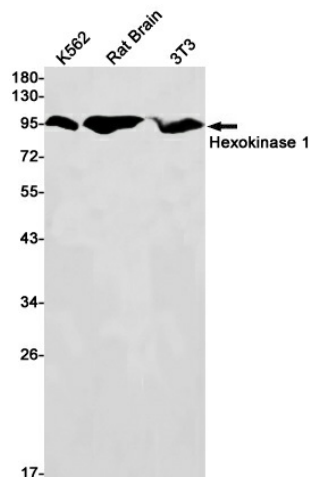
Hexokinase 1 (HK1) Rabbit Monoclonal Antibody [Clone ID: R02-4A8]

Product data:

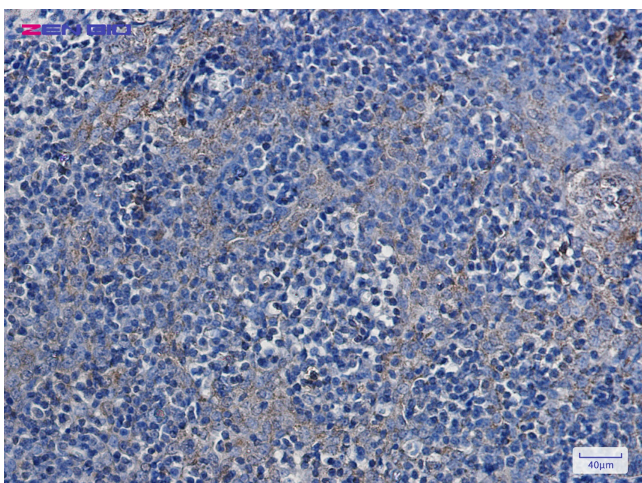
Product Type:	Primary Antibodies
Clone Name:	R02-4A8
Applications:	IF, IHC, WB
Recommended Dilution:	WB: 1/1000-1/5000 IHC: 1/20 ICC/IF: 1/20-1/100
Reactivity:	Human, Mouse, Rat
Host:	Rabbit
Isotype:	IgG
Clonality:	Monoclonal
Immunogen:	A synthetic peptide of human Hexokinase 1
Formulation:	50mM Tris-Glycine(pH 7.4), 0.15M NaCl, 40% Glycerol, 0.01% Sodium azide and 0.05% BSA
Concentration:	lot specific
Purification:	Affinity Purified
Conjugation:	Unconjugated
Storage:	Store at 4°C short term. Aliquot and store at -20°C long term. Avoid freeze/thaw cycles.
Stability:	1 year
Predicted Protein Size:	Calculated MW: 103 kDa; Observed MW: 103 kDa
Gene Name:	hexokinase 1
Database Link:	Entrez Gene 3098 Human P19367
Background:	Swiss-Prot Acc.P19367.MiscellaneousIn vertebrates there are four major glucose-phosphorylating isoenzymes, designated hexokinase I, II, III and IV (glucokinase).
Synonyms:	HK1-ta; HK1-tb; HK1-tc; HKI; HXK1


[View online »](#)

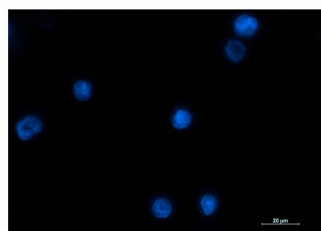
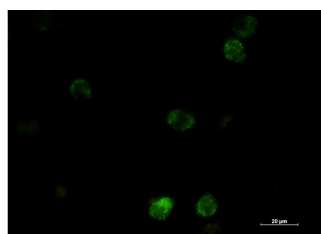
Product images:



Western blot detection of Hexokinase I in K562, Rat Brain, 3T3 cell lysates using Hexokinase I Rabbit mAb (1:1000 diluted). Predicted band size: 103 kDa. Observed band size: 103 kDa.



Immunohistochemistry of Hexokinase I in paraffin-embedded Human tonsil using Hexokinase I Rabbit mAb at dilution 1/20.



Immunocytochemistry analysis of Hexokinase I (green) in K562 using Hexokinase I antibody, and DAPI(blue).