

Product datasheet for **TA384429**

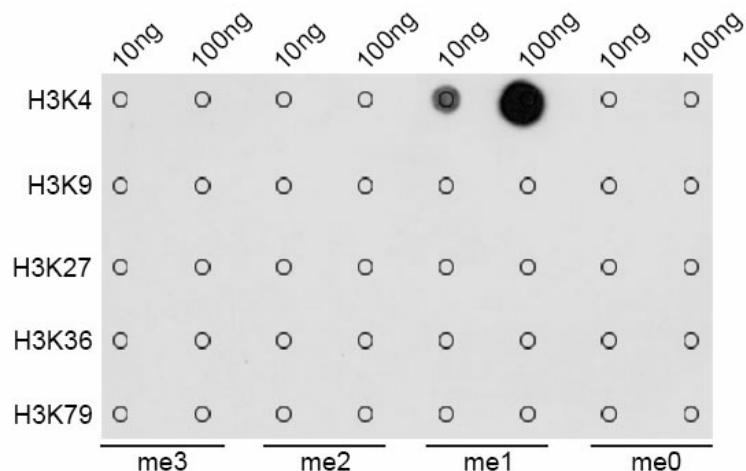
H3FT (HIST3H3) Rabbit Polyclonal Antibody

Product data:

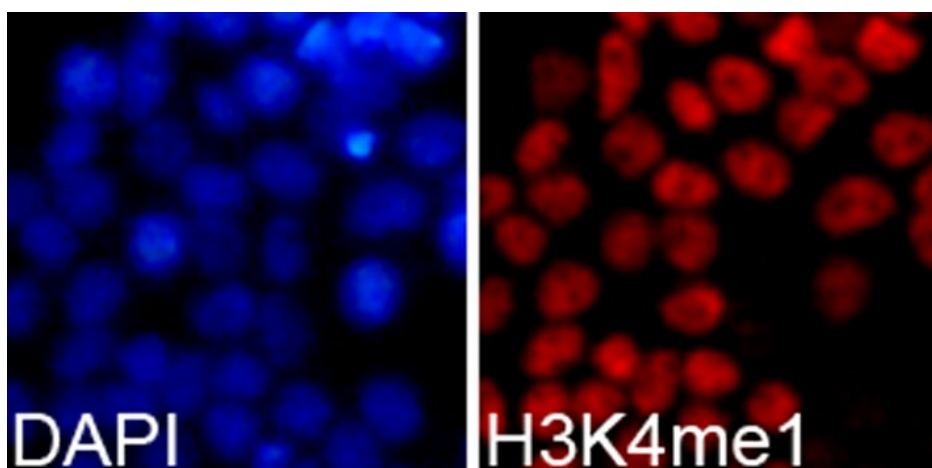
Product Type:	Primary Antibodies
Applications:	ChIP, IF, IHC, IP, WB
Recommended Dilution:	WB: 1/500-1/2000 IHC: 1/50-1/200 IF: 1/50-1/200 IP: 1/50-1/200 ChIP: 1/20-1/100
Reactivity:	Human, Mouse, Rat
Host:	Rabbit
Isotype:	IgG
Clonality:	Polyclonal
Immunogen:	A synthetic methylated peptide corresponding to residues surrounding K4 of human histone H3 (Methylated)
Formulation:	Liquid in PBS containing 50% glycerol, 0.5% BSA and 0.02% sodium azide, pH 7.3.
Concentration:	lot specific
Purification:	Affinity Purified
Conjugation:	Unconjugated
Storage:	Store at 4°C short term. Aliquot and store at -20°C long term. Avoid freeze/thaw cycles.
Stability:	1 year
Predicted Protein Size:	Calculated MW:15kDa; Observed MW:18kDa
Gene Name:	histone cluster 3, H3
Database Link:	Entrez Gene 8290 Human Q16695
Background:	Swiss-Prot Acc.Q16695.
Synonyms:	H3.4; H3/g; H3/t; H3FT; H3t; MGC126886; MGC126888



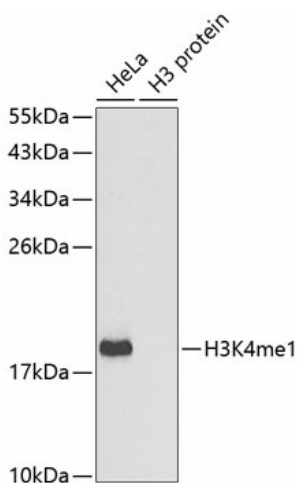
[View online »](#)

Product images:


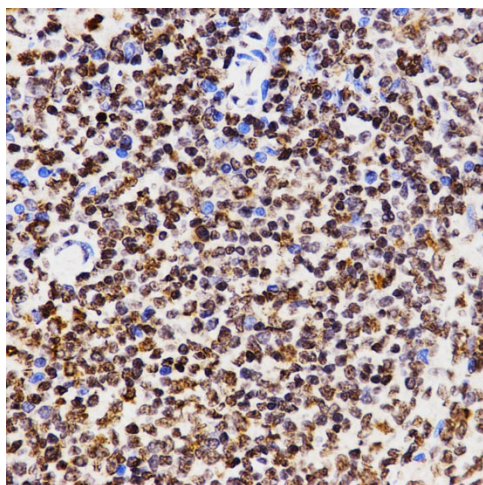
- MonoMethyl-Histone H3-K4 pAb Dot-blot analysis of all sorts of methylation peptides using MonoMethyl-Histone H3-K4 antibody .



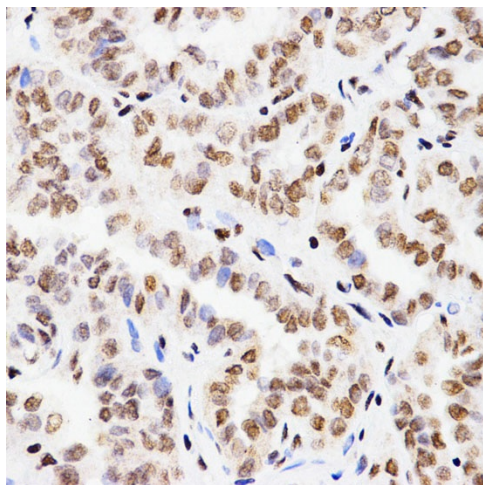
Immunofluorescence - MonoMethyl-Histone H3-K4 pAb Immunofluorescence analysis of 293T cells using MonoMethyl-Histone H3-K4 antibody . Blue: DAPI for nuclear staining.



Western blot - MonoMethyl-Histone H3-K4 pAb
 Western blot analysis of extracts of various cell lines, using MonoMethyl-Histone H3-K4 antibody .Secondary antibody: HRP Goat Anti-Rabbit IgG (H+L) at 1:10000 dilution.Lysates/proteins: 25ug per lane.Blocking buffer: 3% nonfat dry milk in TBST.



Immunohistochemistry - MonoMethyl-Histone H3-K4 pAb
 Immunohistochemistry of paraffin-embedded rat spleen using MonoMethyl-Histone H3-K4 antibody at dilution of 1:2 (4x lens).



Immunohistochemistry - MonoMethyl-Histone H3-K4 pAb
 Immunohistochemistry of paraffin-embedded human thyroid cancer using MonoMethyl-Histone H3-K4 antibody at dilution of 1:200 (40x lens).