

Product datasheet for **TA384416S**

H3FT (HIST3H3) Rabbit Monoclonal Antibody [Clone ID: R01-8I4]

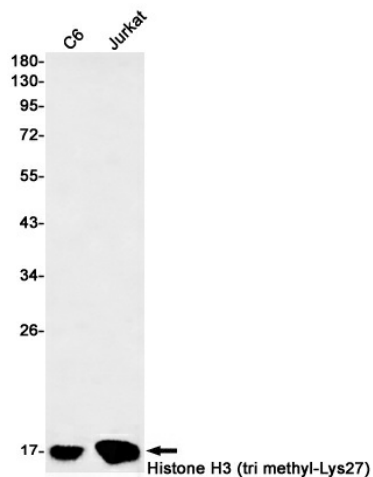
Product data:

Product Type:	Primary Antibodies
Clone Name:	R01-8I4
Applications:	ChIP, IF, IHC, IP, WB
Recommended Dilution:	WB: 1/1000 IHC: 1/50 IF: 1/50 IP: 1/20 ChIP: 1/20
Reactivity:	Human, Rat
Host:	Rabbit
Isotype:	IgG
Clonality:	Monoclonal
Immunogen:	A synthetic methyl-peptide corresponding to residues surrounding Lys27 of human Histone H3 (Methylated)
Formulation:	50mM Tris-Glycine(pH 7.4), 0.15M NaCl, 40% Glycerol, 0.01% Sodium azide and 0.05% BSA
Concentration:	lot specific
Purification:	Affinity Purified
Conjugation:	Unconjugated
Storage:	Store at 4°C short term. Aliquot and store at -20°C long term. Avoid freeze/thaw cycles.
Stability:	1 year
Predicted Protein Size:	Calculated MW:15 kDa,Observed MW:17 kDa
Gene Name:	histone cluster 3, H3
Database Link:	Entrez Gene 8290 Human P68431
Synonyms:	H3.4; H3/g; H3/t; H3FT; H3t; MGC126886; MGC126888

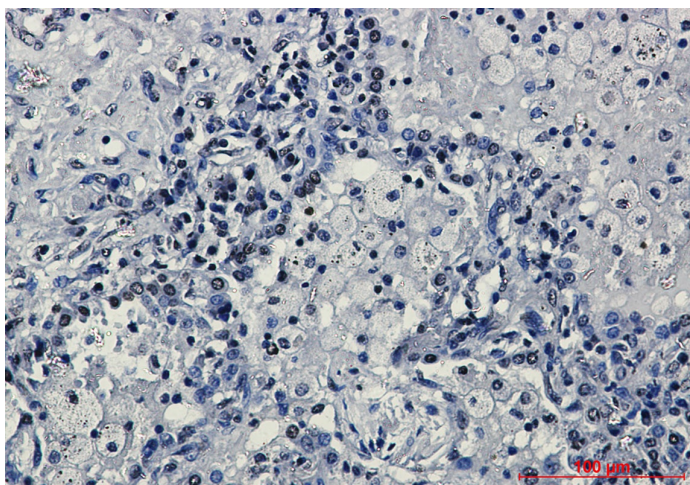


[View online »](#)

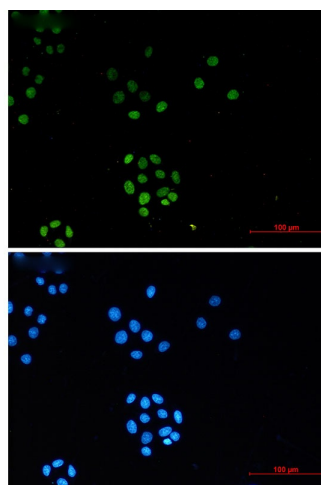
Product images:



Western blot analysis of Histone H3 (tri methyl-Lys27) in C6, Jurkat lysates using TriMethyl-Histone H3 (Lys27) antibody.



Immunohistochemistry analysis of paraffin-embedded Human lung cancer using TriMethyl-Histone H3 (Lys27) antibody. High-pressure and temperature Sodium Citrate pH 6.0 was used for antigen retrieval.



Immunocytochemistry analysis of TriMethyl-Histone H3 (Lys27) (green) in HeLa using TriMethyl-Histone H3 (Lys27) antibody, and DAPI(blue)