

Product datasheet for **TA384411**

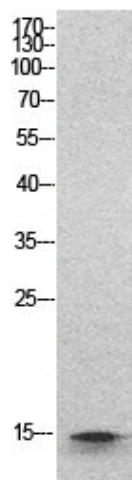
H2BC21 Rabbit Polyclonal Antibody

Product data:

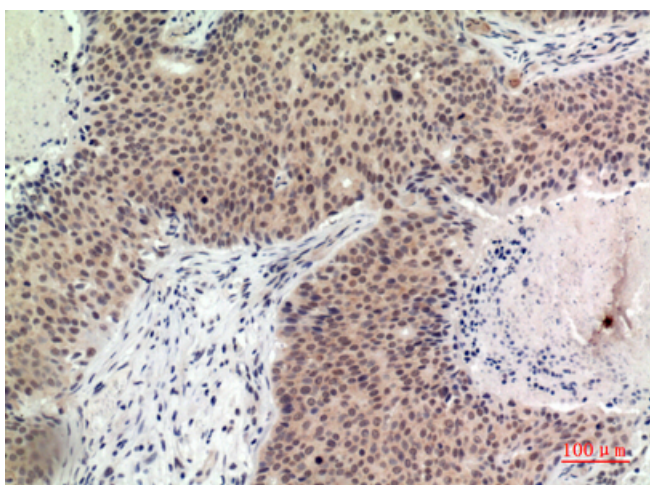
Product Type:	Primary Antibodies
Applications:	ELISA, IHC, WB
Recommended Dilution:	WB: 1/500-1/2000 IHC-p: 1/100-1/300 ELISA: 1/20000
Reactivity:	Human, Mouse, Rat
Host:	Rabbit
Isotype:	IgG
Clonality:	Polyclonal
Immunogen:	Synthesized peptide derived from the Internal region of human Histone H2B.
Formulation:	Liquid in PBS containing 50% glycerol, 0.5% BSA and 0.02% sodium azide, pH 7.3.
Concentration:	lot specific
Purification:	Affinity Purified
Conjugation:	Unconjugated
Storage:	Store at 4°C short term. Aliquot and store at -20°C long term. Avoid freeze/thaw cycles.
Stability:	1 year
Predicted Protein Size:	Observed MW (kDa):15
Gene Name:	histone cluster 2, H2be
Database Link:	Entrez Gene 8349 Human P33778
Background:	Swiss-Prot Acc.P33778/P62807/P58876/Q93079/P06899/O60814/Q99880/Q99879/Q99877/P23527.
Synonyms:	GL105; H2B; H2B-GL105; H2B.1; H2B.q; H2B/q; H2BFQ; H2BGL105; H2BQ; MGC119802; MGC119804; MGC129733; MGC129734



[View online »](#)

Product images:

Western blot analysis of Histone H2B in HeLa lysates using Histone H2B antibody.



Immunohistochemistry analysis of paraffin-embedded Human Breastcancer using Histone H2B antibody. High-pressure and temperature Sodium Citrate pH 6.0 was used for antigen retrieval.