

Product datasheet for **TA384410**

Histone H1.3 (HIST1H1D) Rabbit Polyclonal Antibody

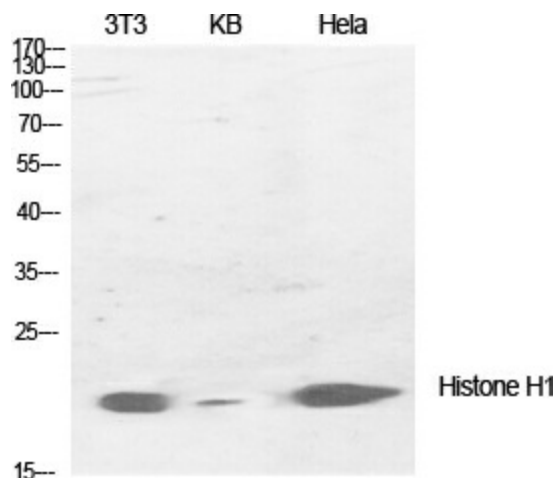
Product data:

Product Type:	Primary Antibodies
Applications:	ELISA, IF, IHC, WB
Recommended Dilution:	WB: 1/500-1/2000 IHC: 1/100-1/300 IF: 1/200-1/1000 ELISA: 1/20000
Reactivity:	Human, Mouse
Host:	Rabbit
Isotype:	IgG
Clonality:	Polyclonal
Immunogen:	The antiserum was produced against synthesized peptide derived from human Histone H1. AA range:1-50
Formulation:	Liquid in PBS containing 50% glycerol, 0.5% BSA and 0.02% sodium azide, pH 7.3.
Concentration:	lot specific
Purification:	Affinity Purified
Conjugation:	Unconjugated
Storage:	Store at 4°C short term. Aliquot and store at -20°C long term. Avoid freeze/thaw cycles.
Stability:	1 year
Predicted Protein Size:	Observed MW (kDa):3128
Gene Name:	histone cluster 1, H1d
Database Link:	Entrez Gene 3007 Human P16401
Background:	Swiss-Prot Acc.P16401/P16402/P10412.
Synonyms:	H1.3; H1F3; MGC138176

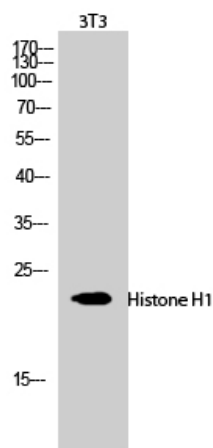


[View online »](#)

Product images:



Western blot analysis of Histone H1 in various lysates using Histone H1 antibody.



Western blot analysis of Histone H1 in 3T3 lysates using Histone H1 antibody.