

## Product datasheet for **TA384409S**

### HIF-1 alpha (HIF1A) Rabbit Polyclonal Antibody

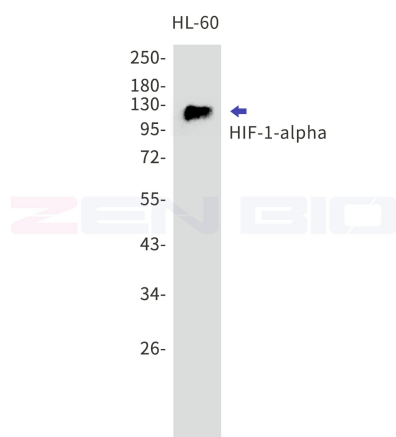
#### Product data:

Product Type:	Primary Antibodies
Applications:	FC, IF, IHC, IP, WB
Recommended Dilution:	WB: 1/1000 IHC: 1/50 ICC/IF: 1/250 FC: 1/50 IP: 1/50
Reactivity:	Human
Host:	Rabbit
Isotype:	IgG
Clonality:	Polyclonal
Immunogen:	A synthetic peptide of human HIF-1-alpha
Formulation:	50mM Tris-Glycine(pH 7.4), 0.15M NaCl, 40% Glycerol, 0.01% Sodium azide and 0.05% BSA
Concentration:	lot specific
Purification:	Affinity Purified
Conjugation:	Unconjugated
Storage:	Store at 4°C short term. Aliquot and store at -20°C long term. Avoid freeze/thaw cycles.
Stability:	1 year
Predicted Protein Size:	Calculated MW: 93 kDa; Observed MW: 120 kDa
Gene Name:	hypoxia inducible factor 1 alpha subunit
Database Link:	<a href="#">Entrez Gene 3091 Human Q16665</a>
Background:	Swiss-Prot Acc.Q16665.
Synonyms:	bHLHe78; HIF-1alpha; HIF1; HIF1-ALPHA; MOP1; PASD8



[View online »](#)

## Product images:



Western blot detection of HIF-1-alpha in HL-60 cell lysates using HIF-1-alpha Rabbit pAb(1:1000 diluted). Predicted band size:93kDa.Observed band size:120kDa.